

State of Energy – Colorado

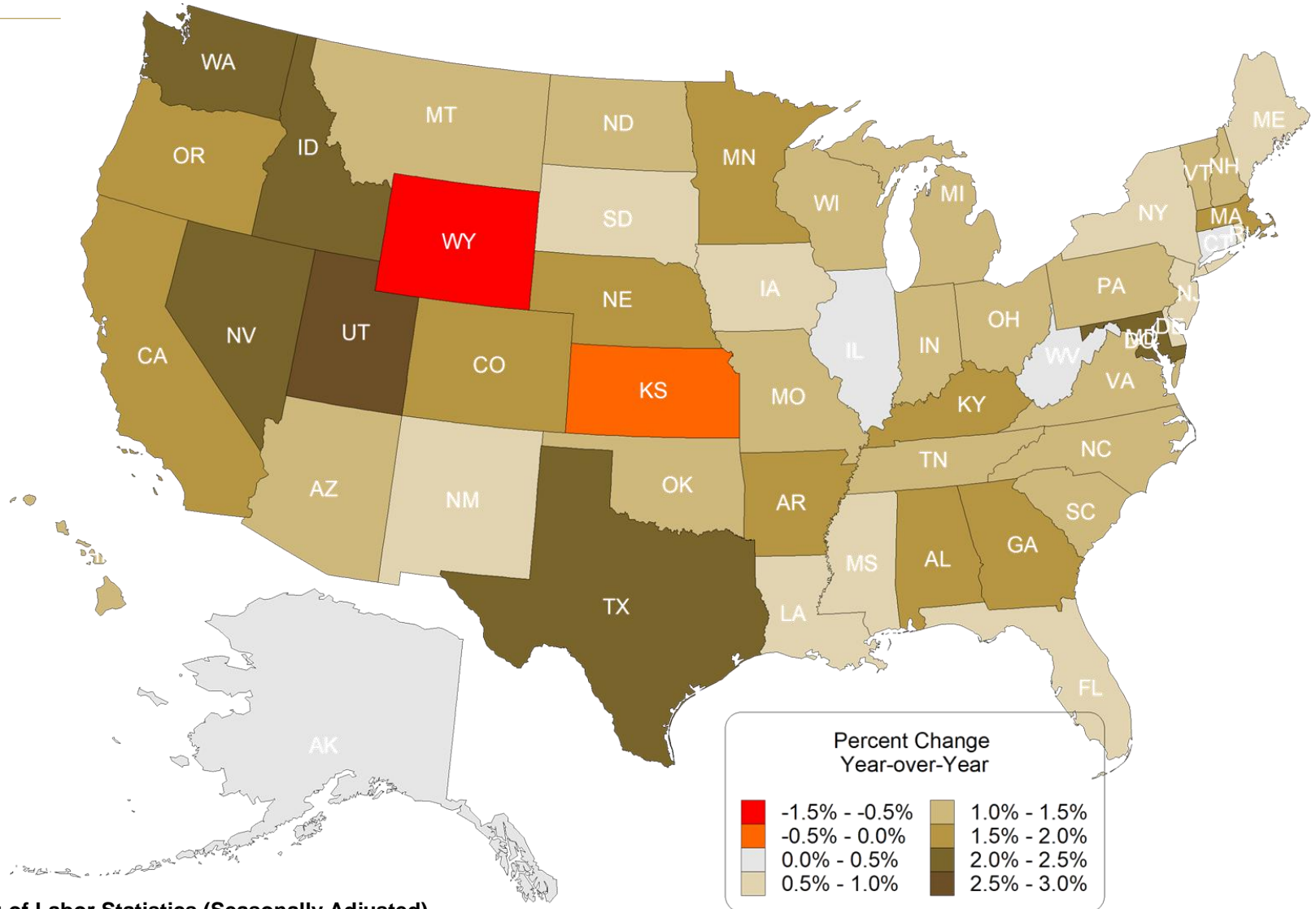


Brian Lewandowski
Associate Director
Business Research Division
October 22, 2017



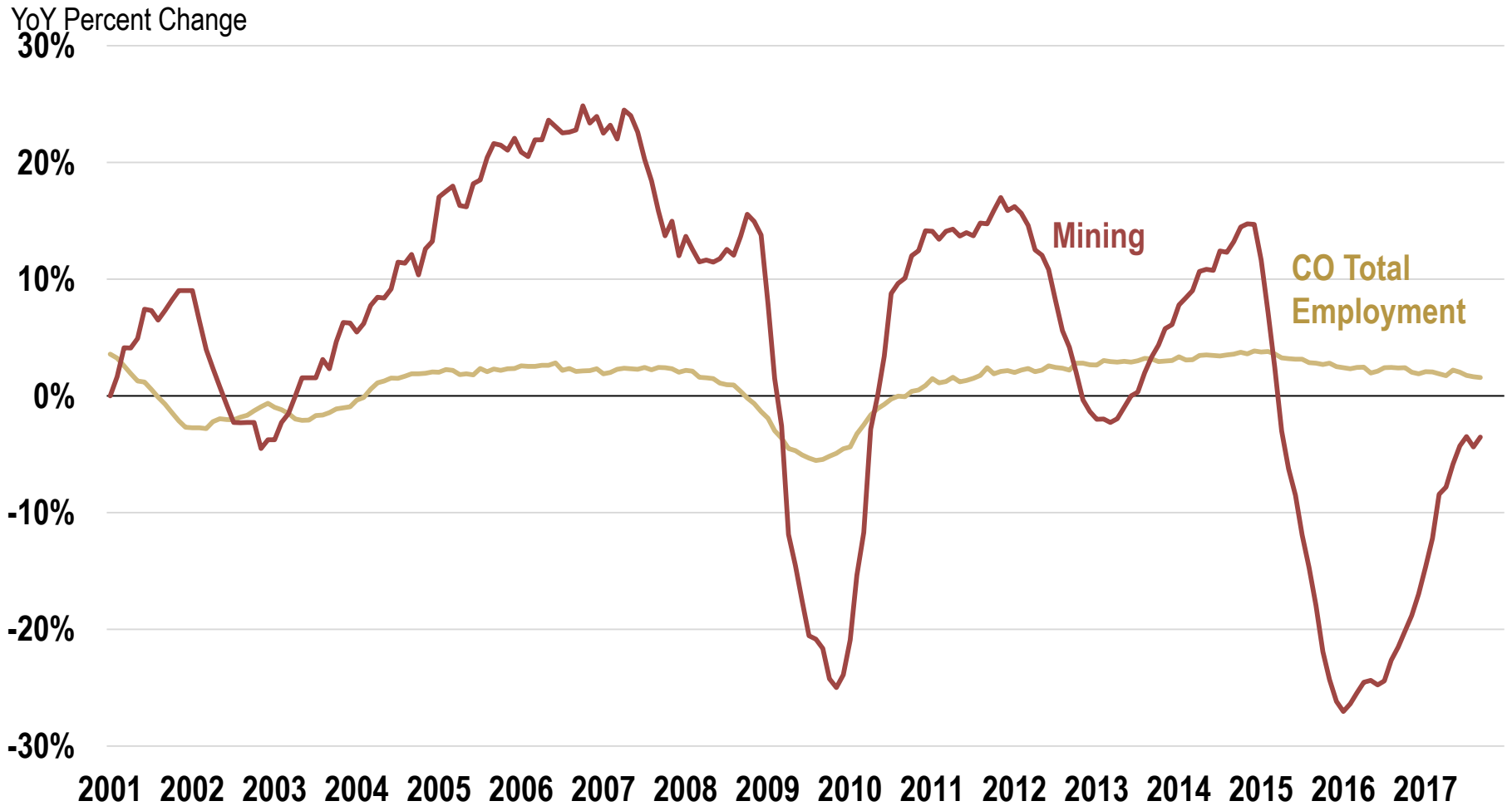
State Employment Growth

Year-over-Year September 2017



Source: Bureau of Labor Statistics (Seasonally Adjusted).

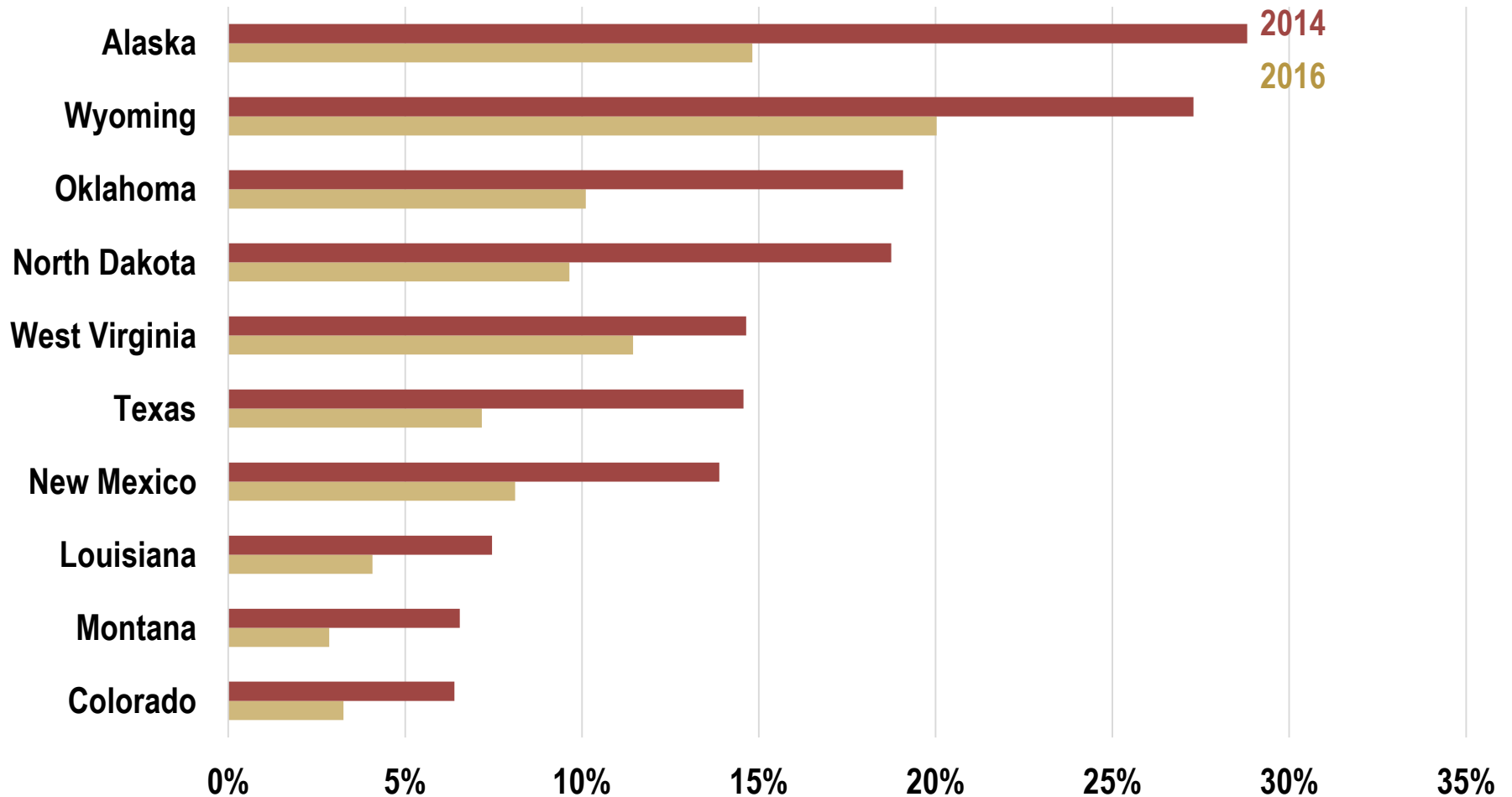
Employment



Source: Bureau of Labor Statistics, CES.

Mining

Share of Nominal GDP, 2014 and 2016



Source: BEA.

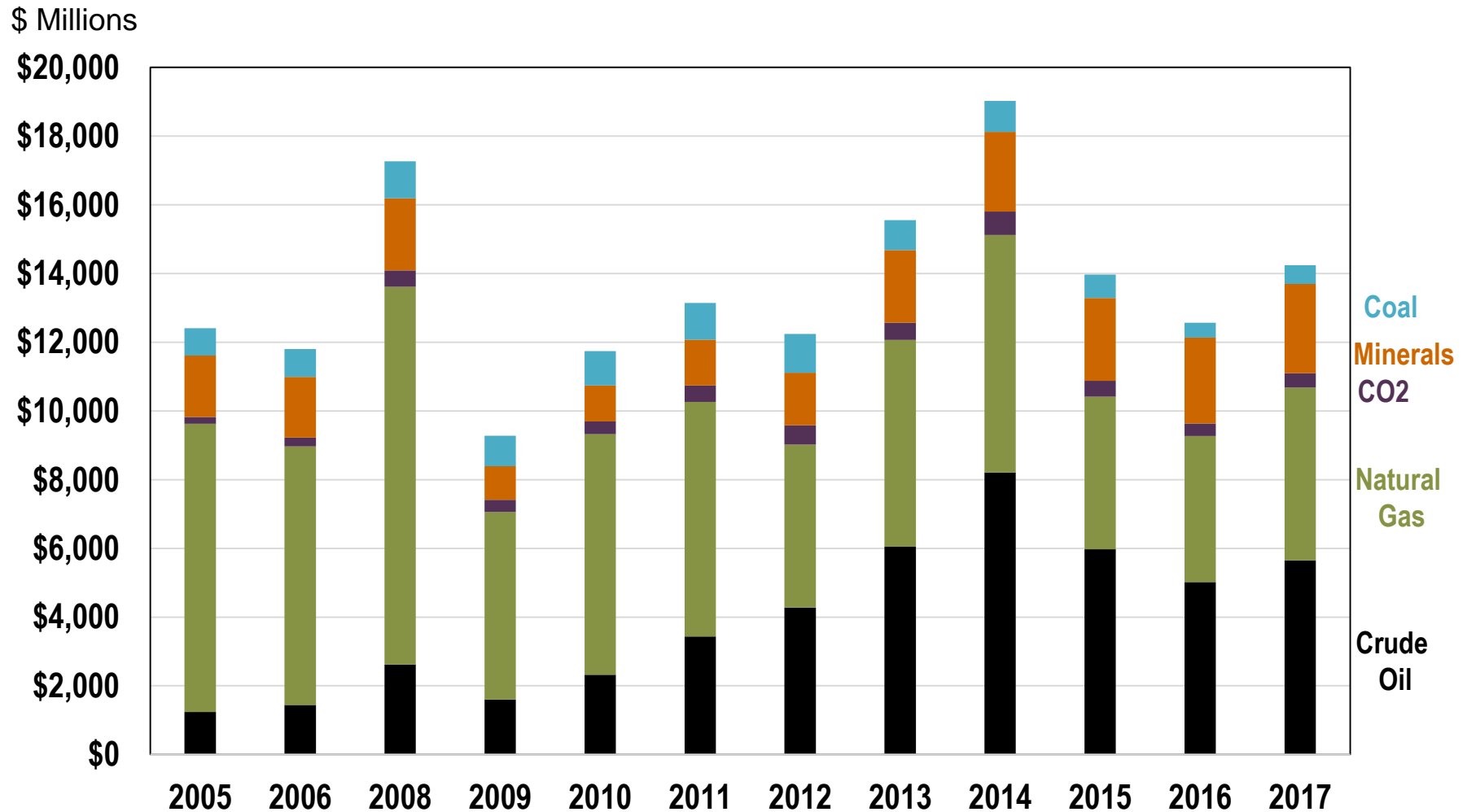
Colorado Energy Rankings (2016)

- 7th Total Energy
- 7th for Crude Oil
- 5th for Natural Gas
- 11th for Coal
- 10th for Solar
- 9th for Wind
- 34th for Electricity Consumption

Sources: Energy Information Administration. Note: Wind and solar based on electricity production.

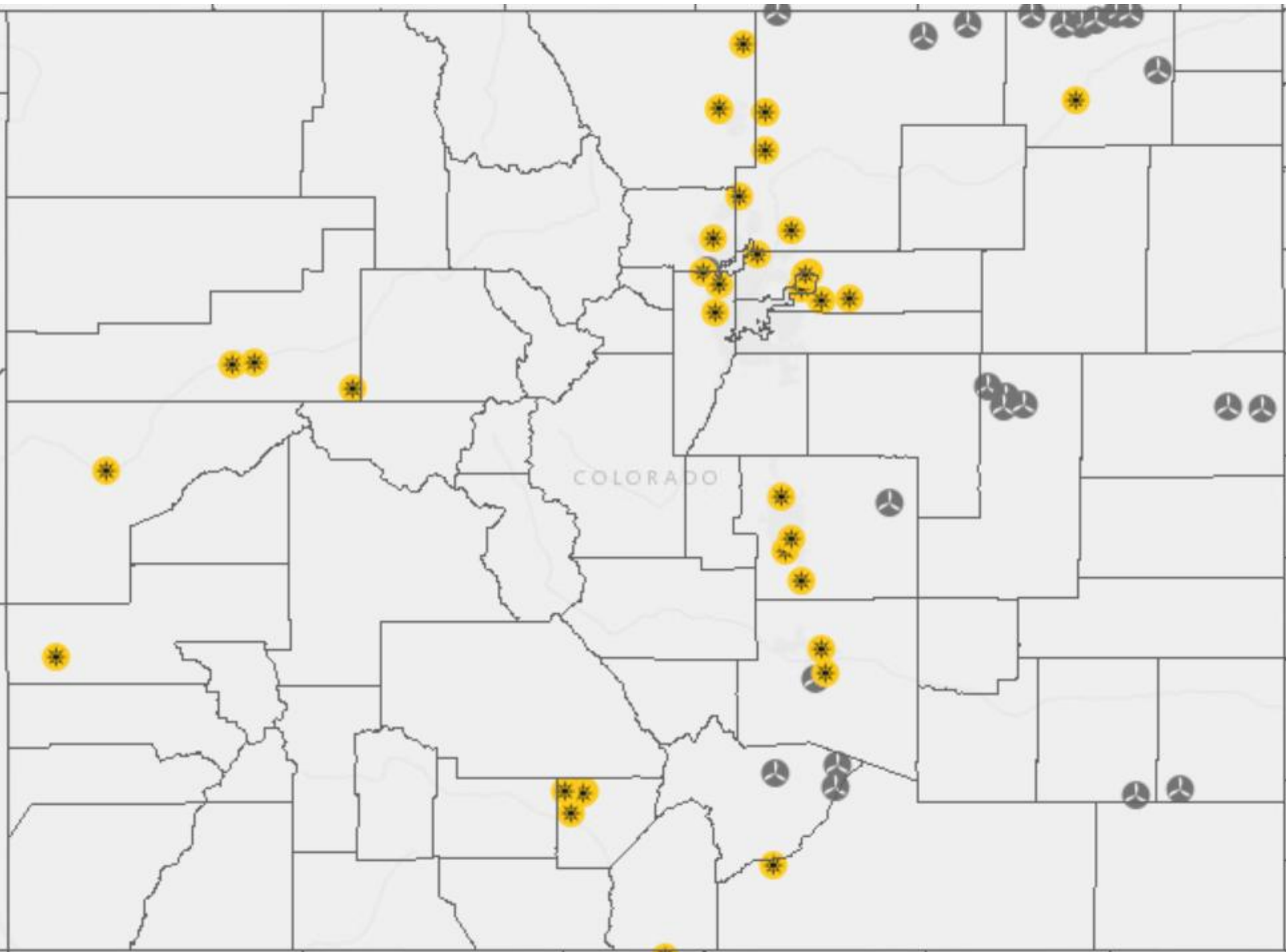
Value of Natural Resources

Colorado



Sources: Colorado Geological Survey Mineral and Minerals Fuel Activity Reports, Colorado Oil and Gas Conservation Commission, Department of Minerals and Geology, and Colorado Business Economic Outlook Committee.

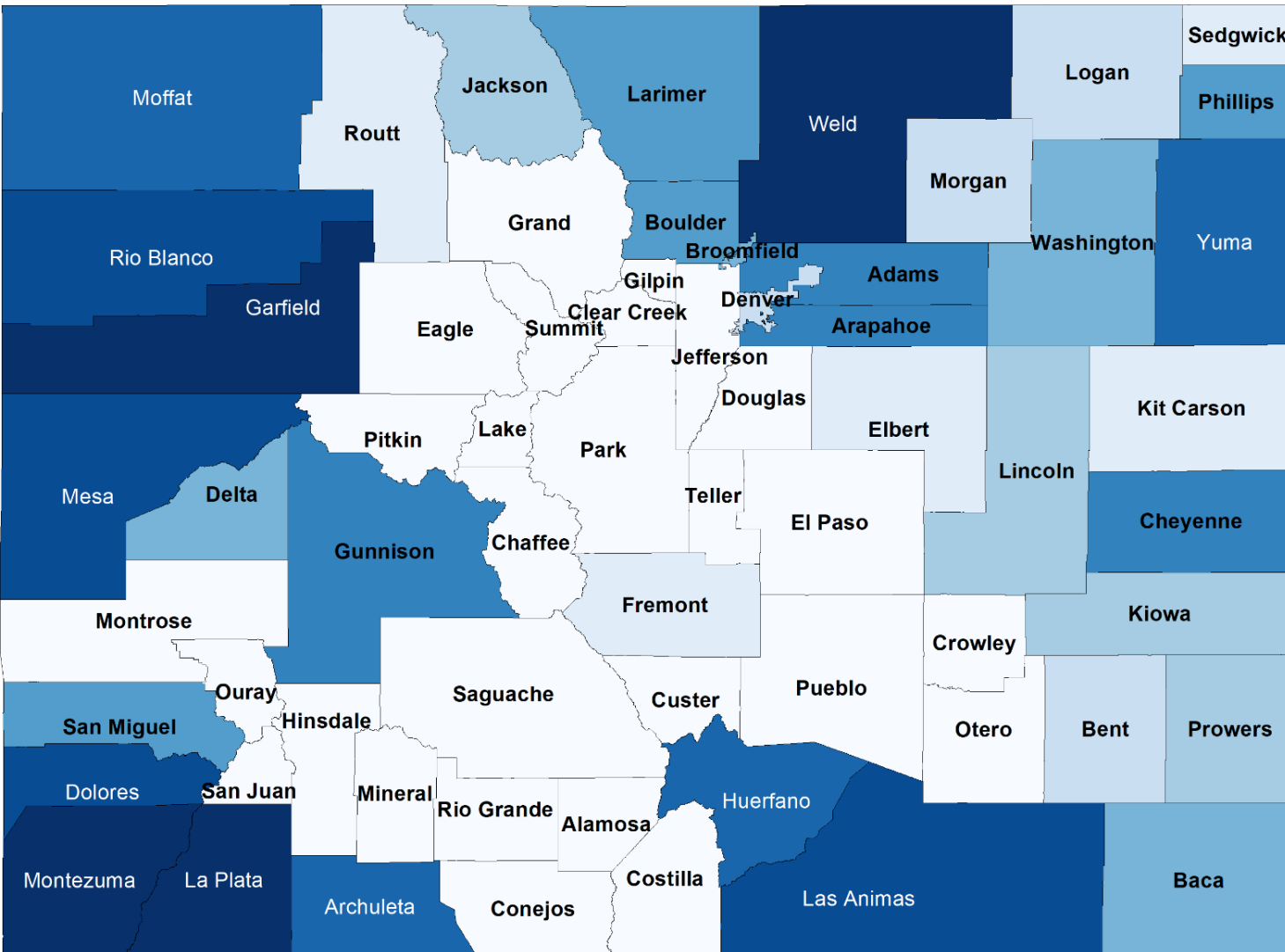
Wind and Solar



Source: Energy Information Administration, State Profile and Energy Estimates.

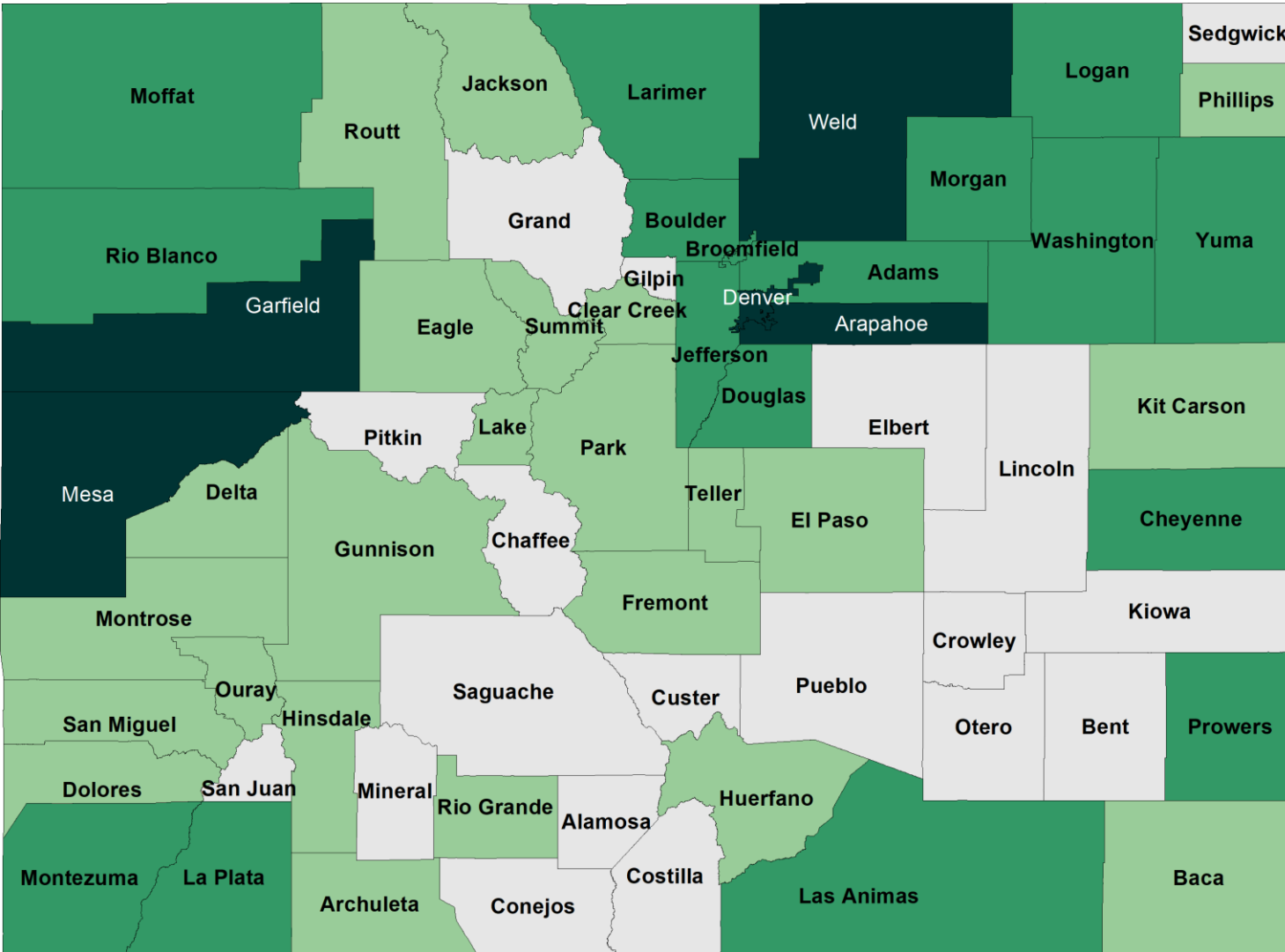
Colorado Natural Gas Production by County

2016



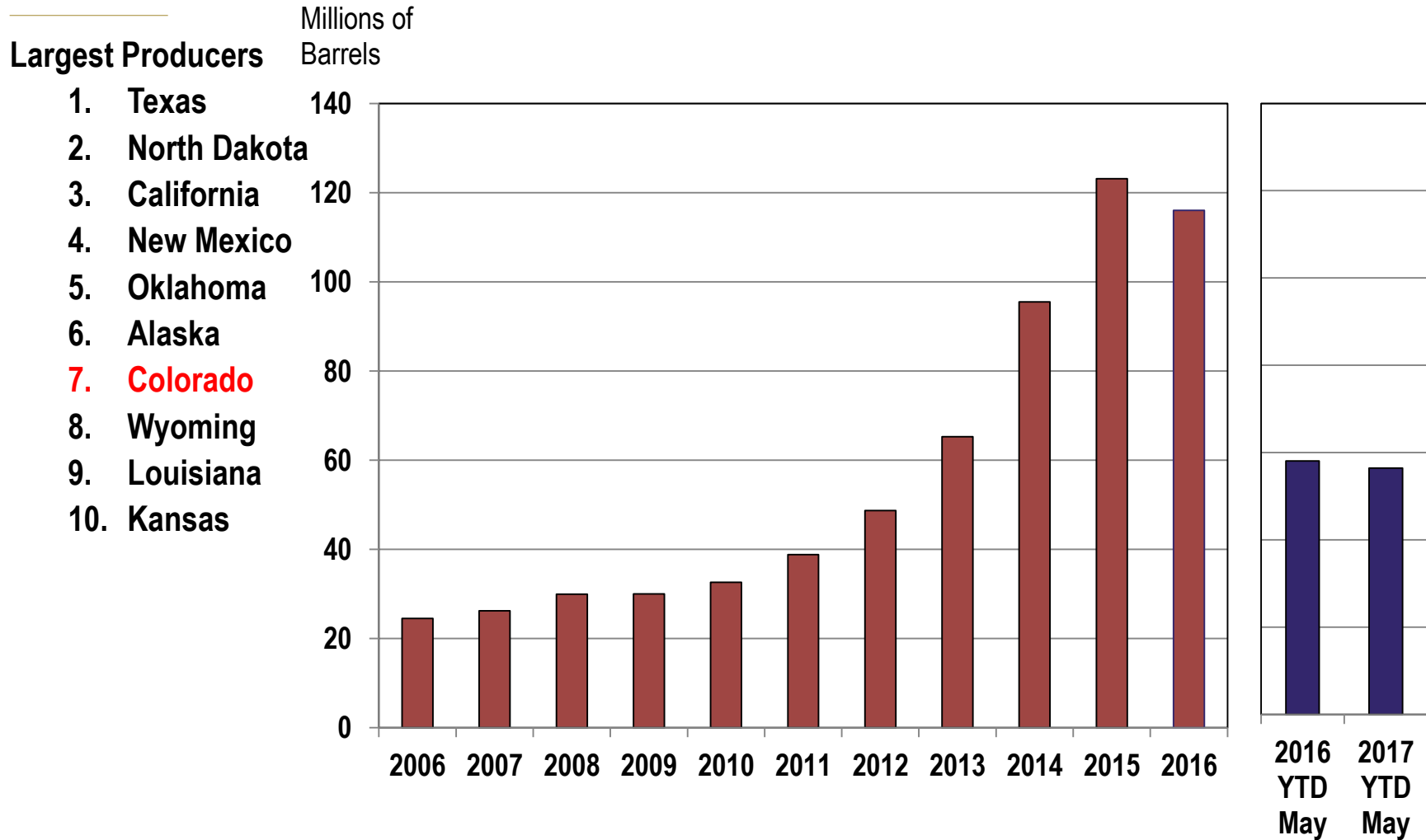
Colorado Oil and Gas Employment by County

2016



Crude Oil Production

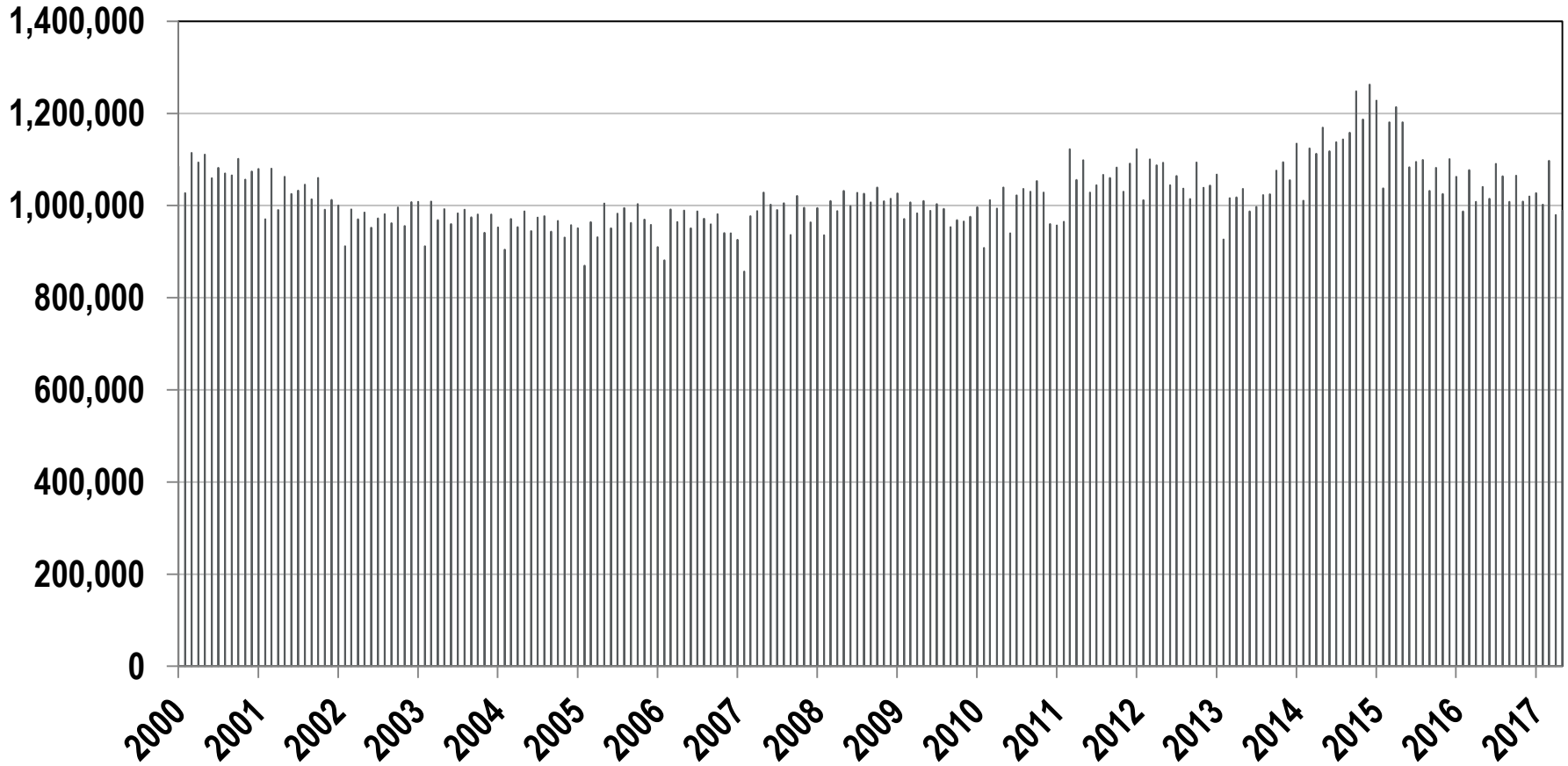
2006-2017



Sources: Rankings from the Energy Information Administration. Production from the Colorado Oil and Gas Conservation Commission.

Colorado (ex. Weld) Oil Production

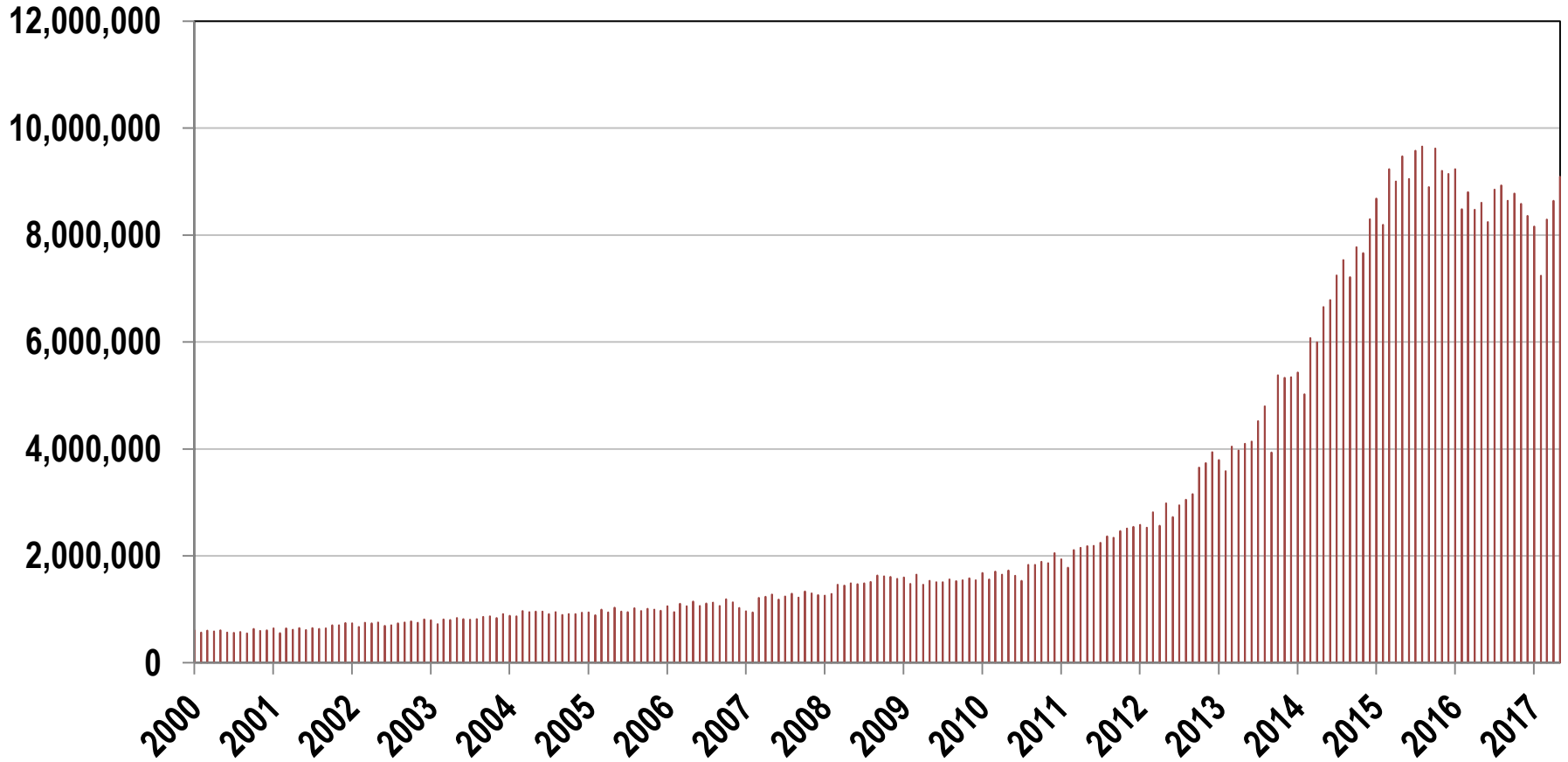
Barrels, Monthly



Source: Colorado Oil and Gas Conservation Commission.

Weld County Oil Production

Barrels, Monthly



Source: Colorado Oil and Gas Conservation Commission.

Colorado Annual Drilling Permits

2000-2017

Permits

9,000

8,000

7,000

6,000

5,000

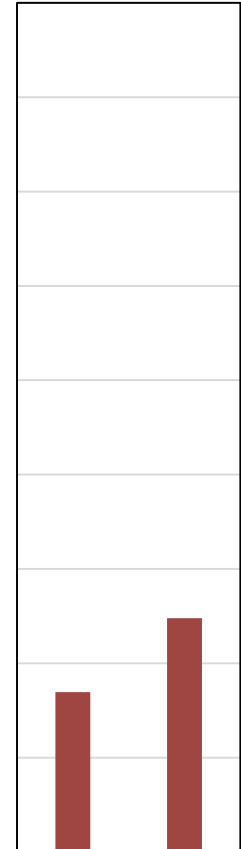
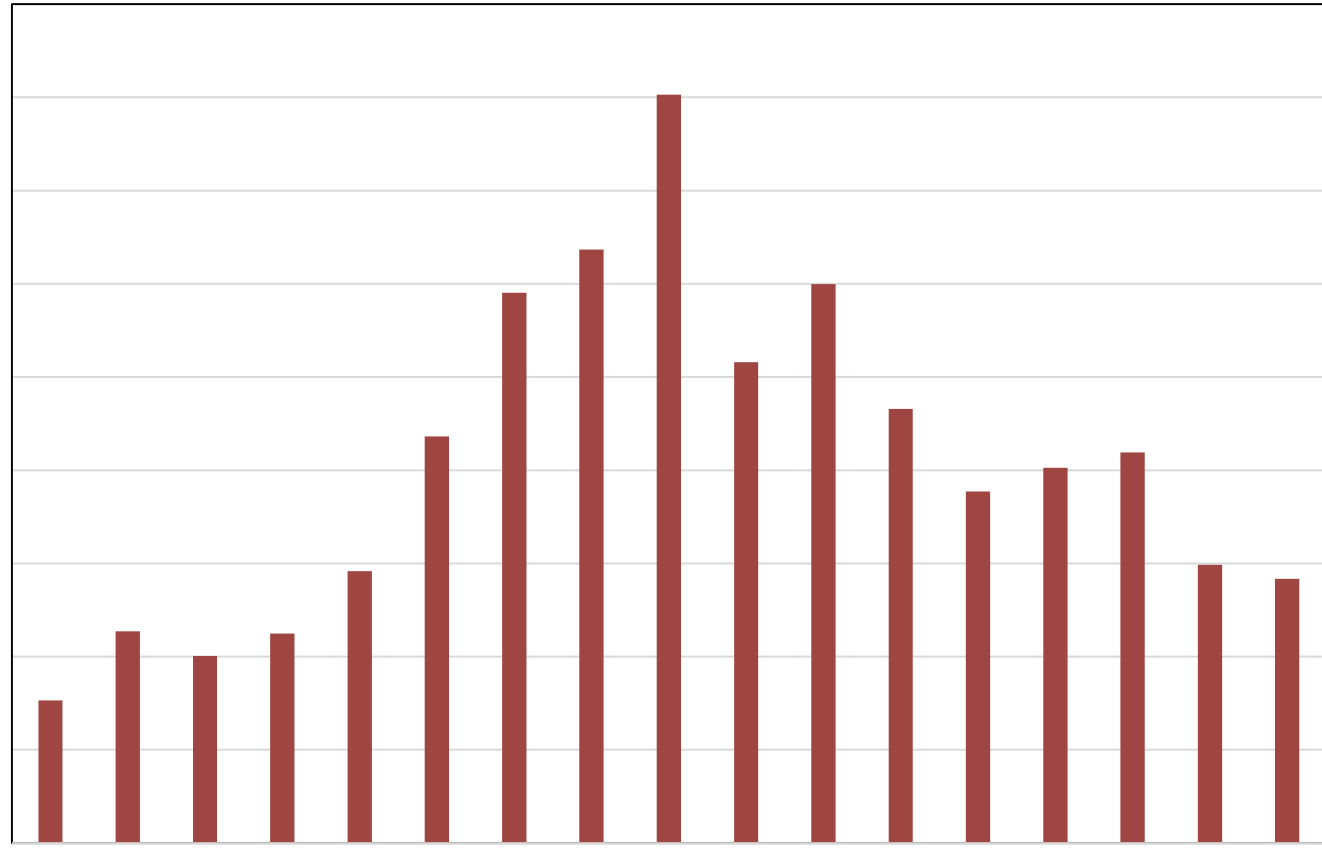
4,000

3,000

2,000

1,000

0



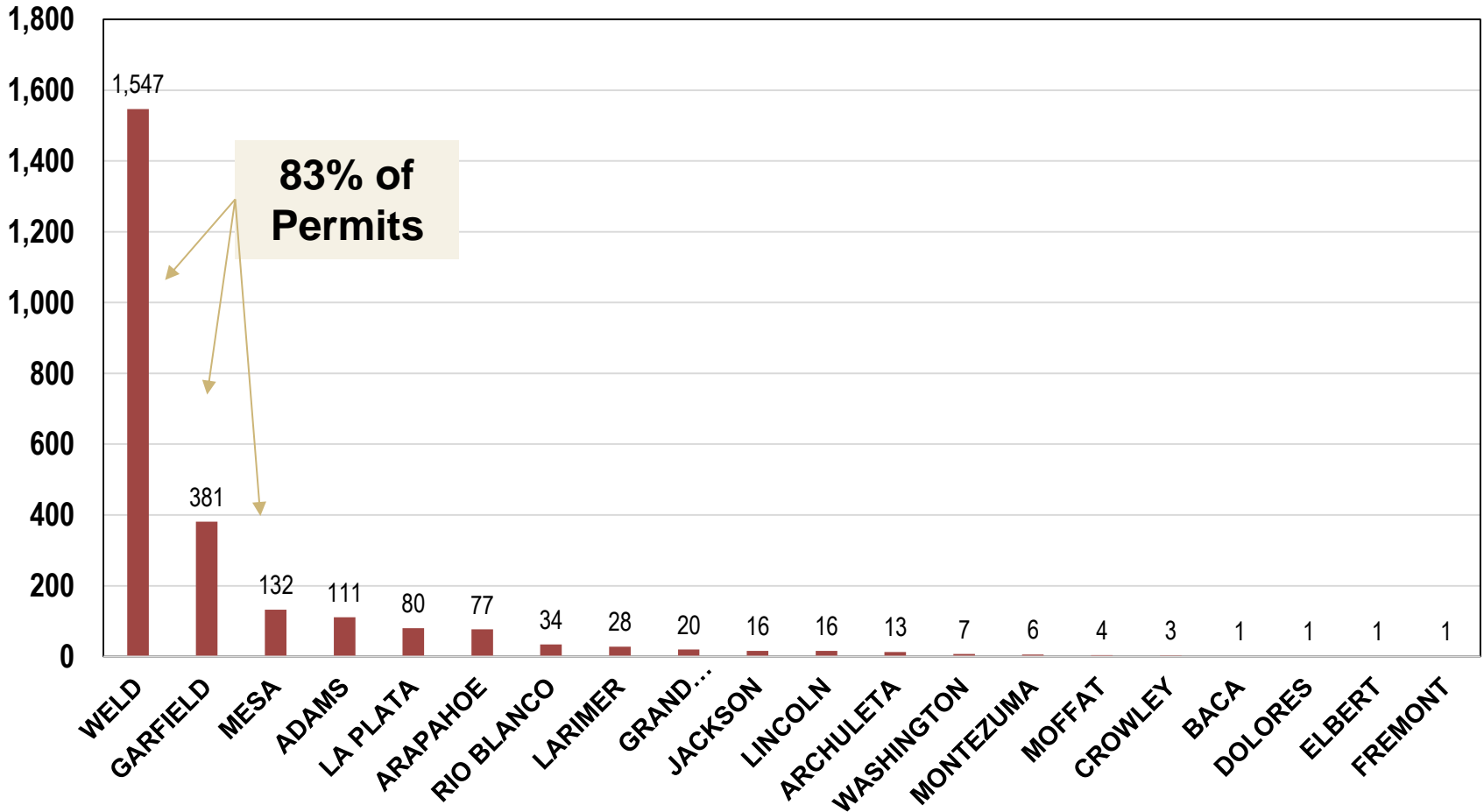
2016 Aug YTD
2017 Aug YTD

Source: COGCC.

Drilling Permits by County

2017 August YTD

Permits



Source: COGCC Staff Reports.

Well Starts by County

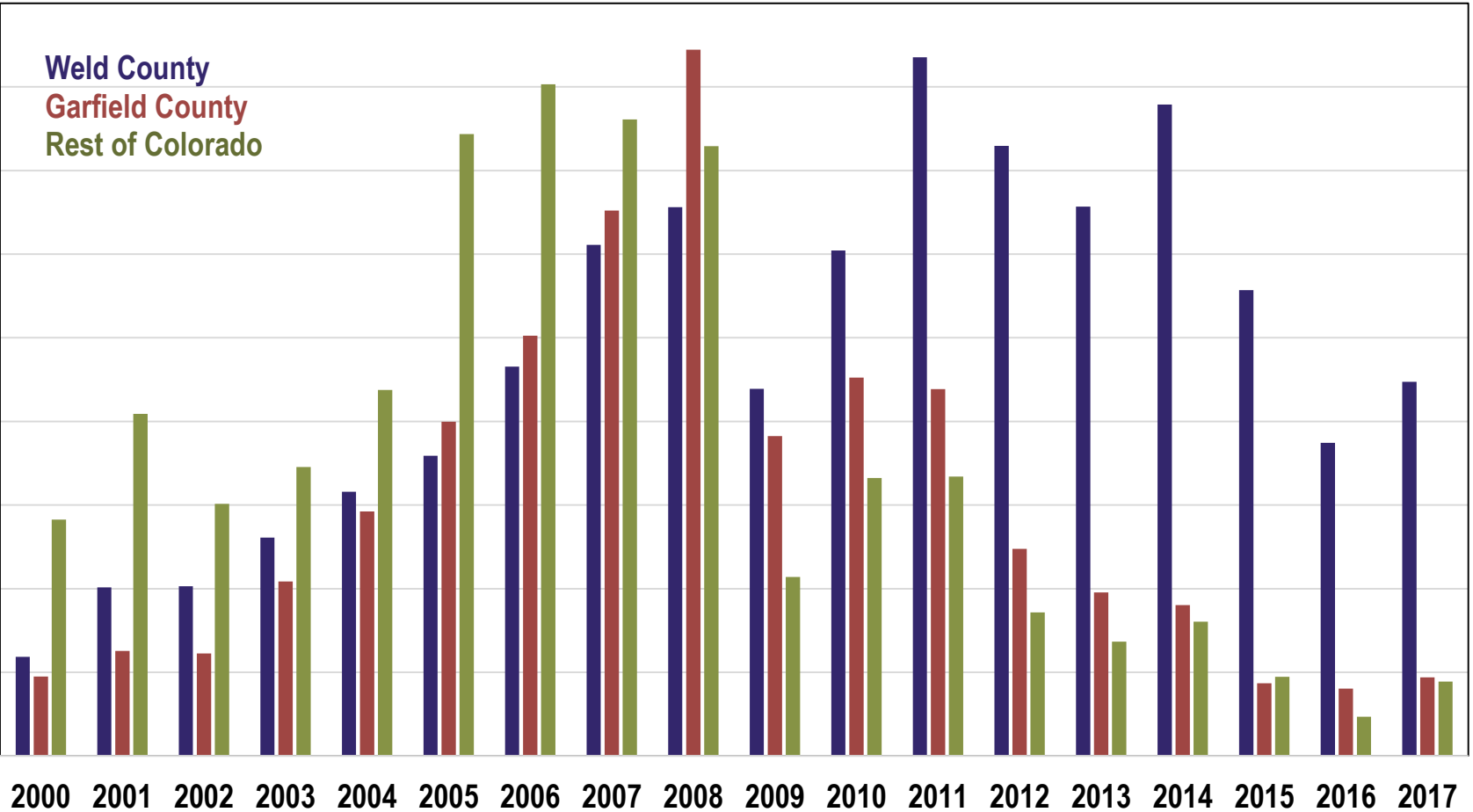
2000-2017

Permits

1,800

1,600
1,400
1,200
1,000
800
600
400
200
0

Weld County
Garfield County
Rest of Colorado

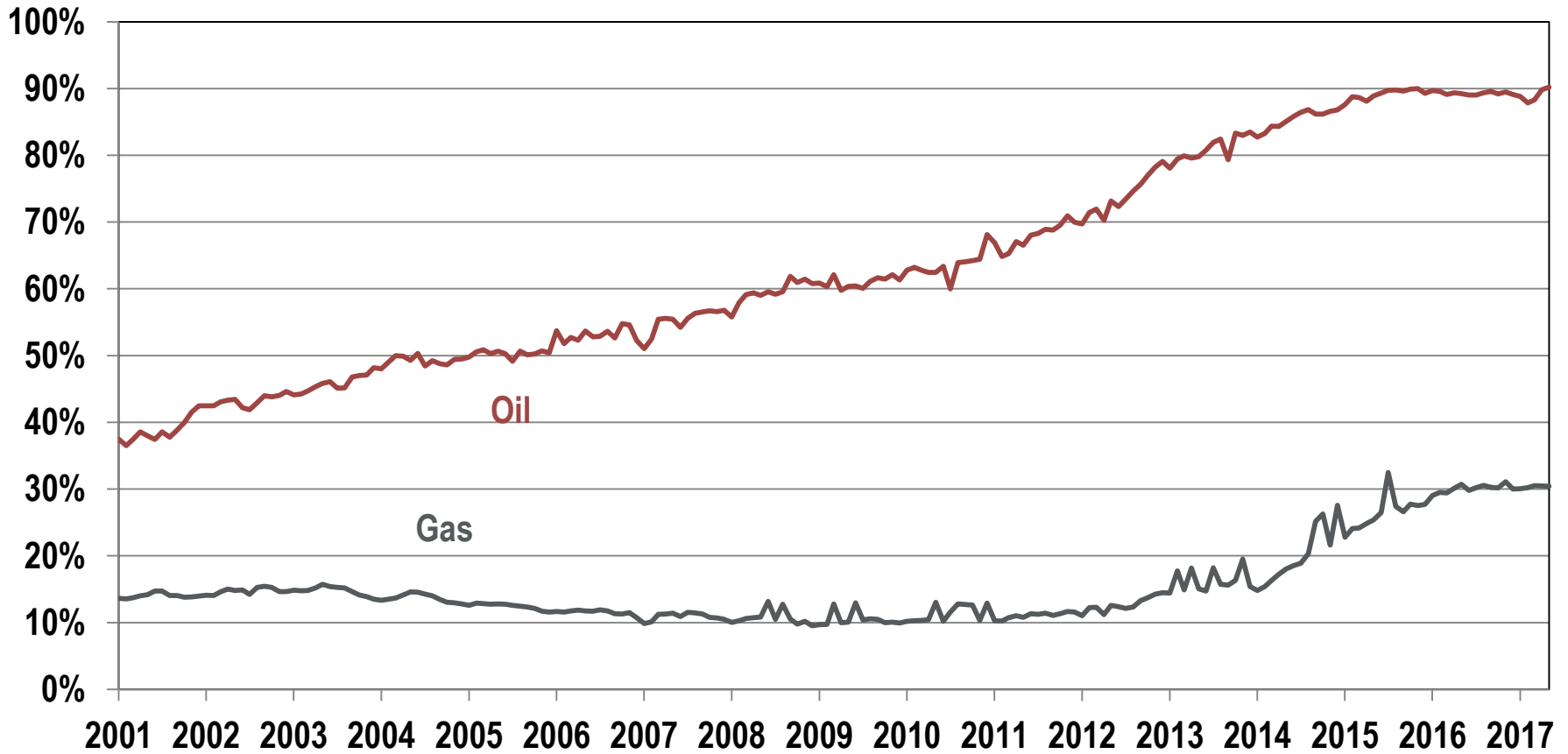


Source: COGCC Staff Reports.

Market Share of Colorado Production

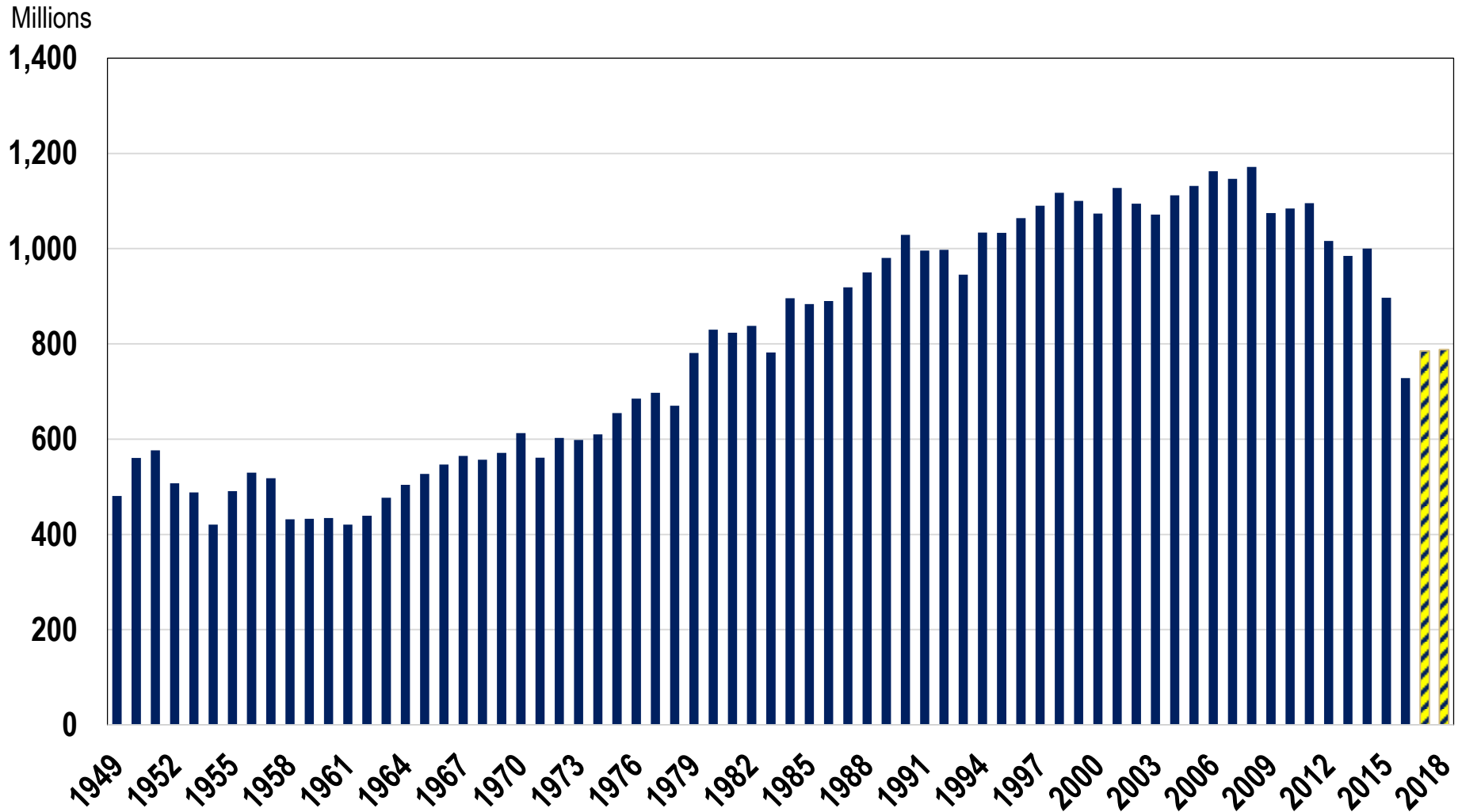
Weld County

Monthly Market Share



Source: Bureau of Labor Statistics

U.S. Coal Production

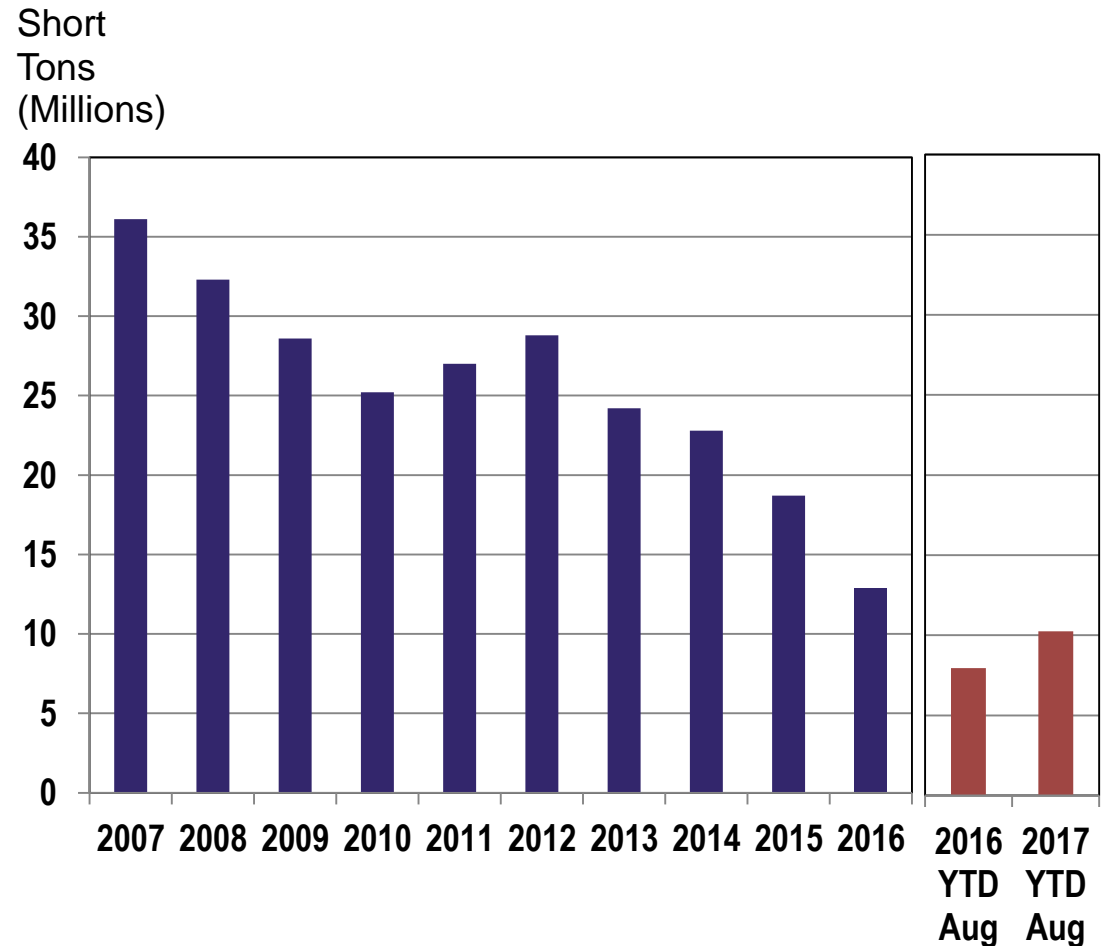


Source: Energy Information Association (EIA), Annual Coal Report and the Short-Term Energy Outlook, October 11, 2017.

Coal Production

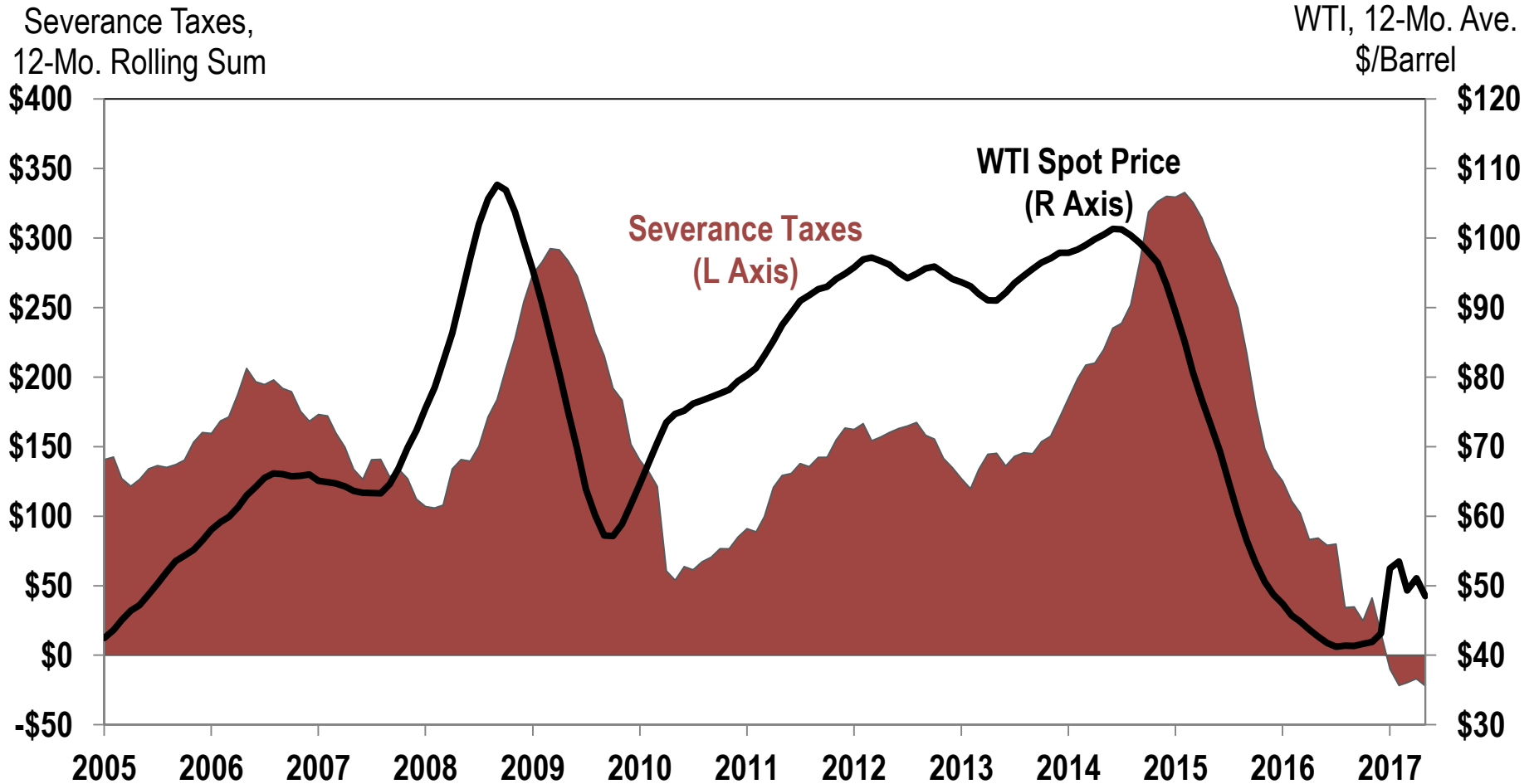
2007-2017

- **Lowest production levels since the mid-1990s**
- **State ranking slipped to 11th in 2016**
- **Government mandates for renewables limiting production of coal**
- **Decreasing demand from TVA**
- **Power plants divesting from coal**



Sources: Colorado Geological Survey Mineral and Mineral Fuel Activity Reports, Colorado Oil and Gas Conservation Commission, Department of Minerals and Geology, and Colorado Business Economic Outlook Committee.

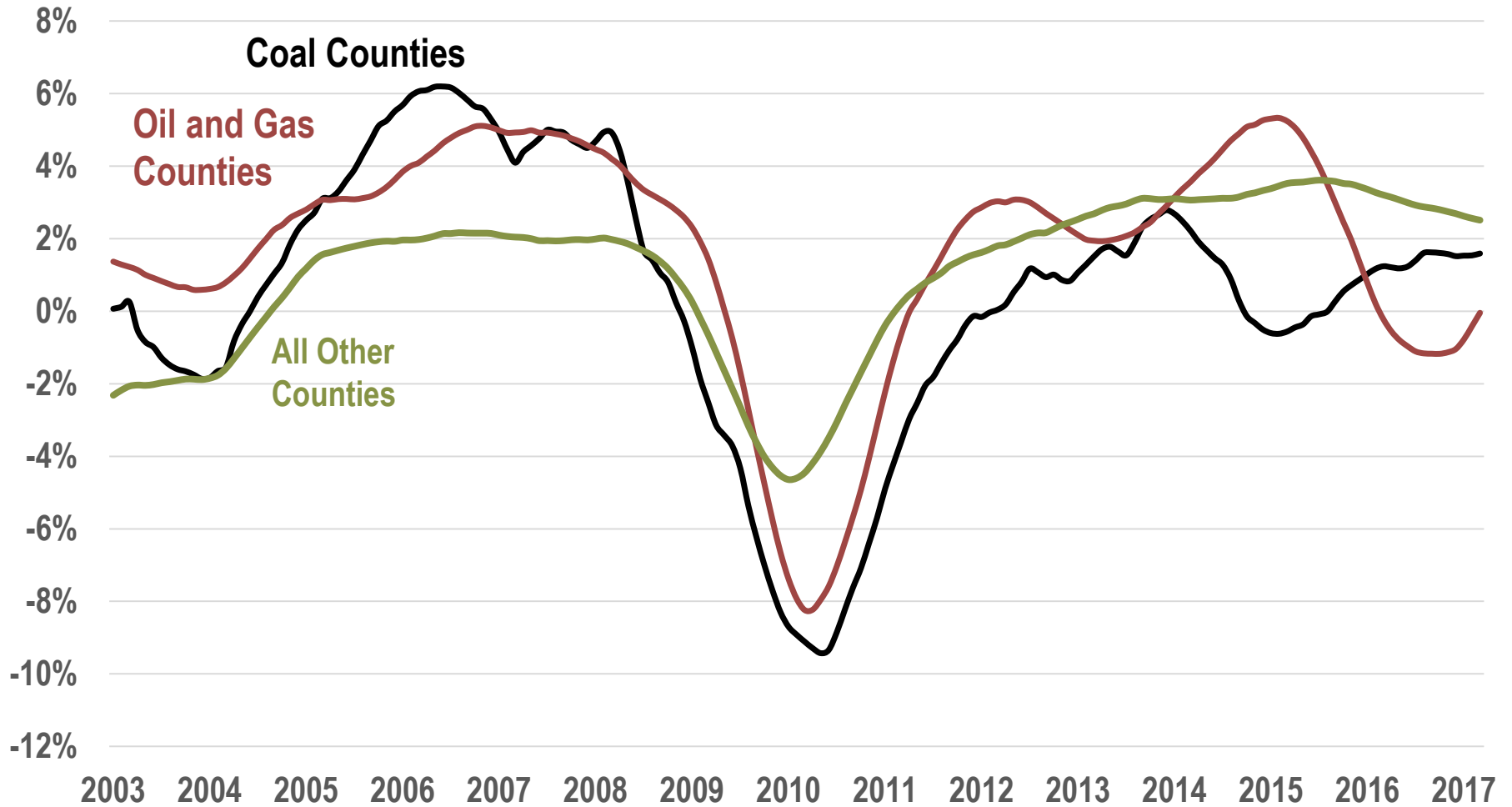
Colorado O&G Severance Taxes



Sources: Energy Information Administration (EIA), Cushing, OK WTI Spot Price FOB; Colorado Department of Revenue.

Employment Growth

Counties with High Concentrations of Industry Employment



Source: Bureau of Labor Statistics, QCEW.

Thank You!

