

Employment Trends during COVID-19

Michael Dalton

Bureau of Labor Statistics

9/21/20



Pandemic



Pandemic

There's a pandemic happening



New Sources of Labor Market Data

affinitysolutions



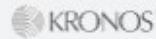
COINOUT



@earnin

homebase

intuit



PAYCHEX

womply

ZEARN

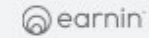


New Sources of Labor Market Data

affinitysolutions

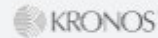


COINOUT



homebase

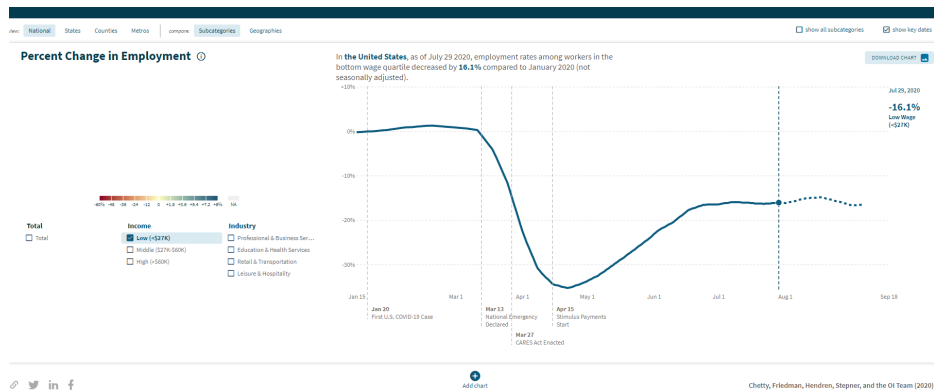
intuit



PAYCHEX

womply

ZEARN



Fun interactive website from [Opportunity Insights](#)



New Sources of Labor Market Data

affinitysolutions



COINOUT



earnin

homebase

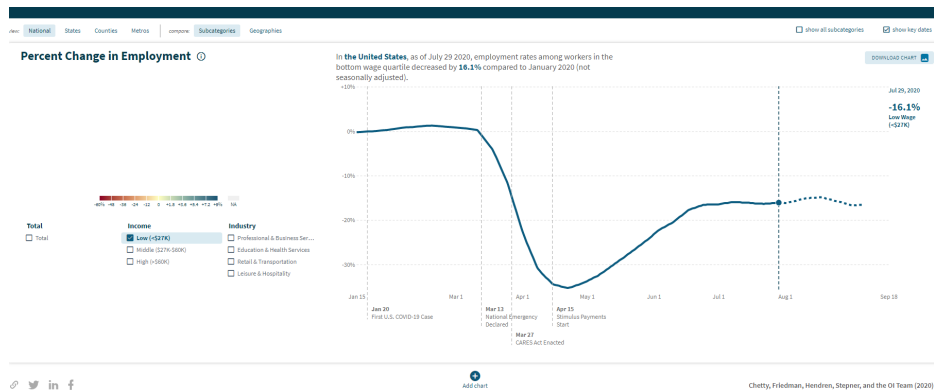
intuit

KRONOS

PAYCHEX

womply

ZEARN



Fun interactive website from Opportunity Insights

But.....

Is this really necessary?



What's the value of this new data?

- Timely!

- ▶ BLS monthly data is available within 3 weeks of collection



What's the value of this new data?

- Timely!

- ▶ BLS monthly data is available within 3 weeks of collection

- Large samples!

- ▶ **The Current Employment Statistics survey (CES) collects monthly from ~600,000 worksites**



What's the value of this new data?

- **Timely!**

- ▶ BLS monthly data is available within 3 weeks of collection

- **Large samples!**

- ▶ The Current Employment Statistics survey (CES) collects monthly from ~600,000 worksites

- **You can get more detail with the data!**

- ▶ **But is it representative?**

Getting Creative with the Standard

- Current Employment Statistics survey (CES)
 - ▶ The other survey in the Employment Situation
 - ▶ Monthly
 - ▶ Large sample (~600,000 worksites)
 - ▶ Longitudinal
 - ▶ Can be linked to other BLS information
 - Other establishments in same firm
 - Employment and wages in previous years

Longitudinal CES

- Tracking establishments month to month in the CES
 - ▶ Never really been done before in research



Longitudinal CES

- Tracking establishments month to month in the CES
 - ▶ Never really been done before in research
- This allows identifying for an establishment
 - ▶ Possible closures
 - ▶ Employment relative to pre-pandemic level

How is COVID-19 Affecting Employment Locally?

- There is obviously a broad economic effect
- But is the local spread directly impacting employment?



Strategy

- Using # of cases from NYTimes at county
 - ▶ Group counties by # of cases in past 4 weeks



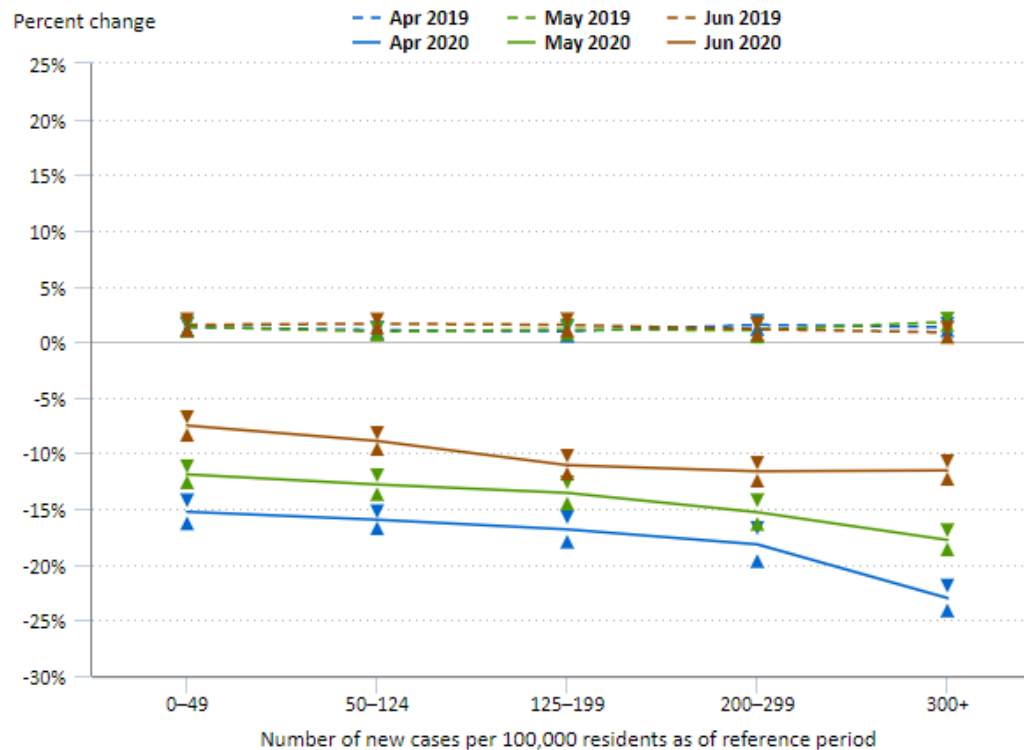
Strategy

- Using # of cases from NYTimes at county
 - ▶ Group counties by # of cases in past 4 weeks

- Employment from CES
 - ▶ For establishments in each county group, what happened to employment since February?

Overall Results

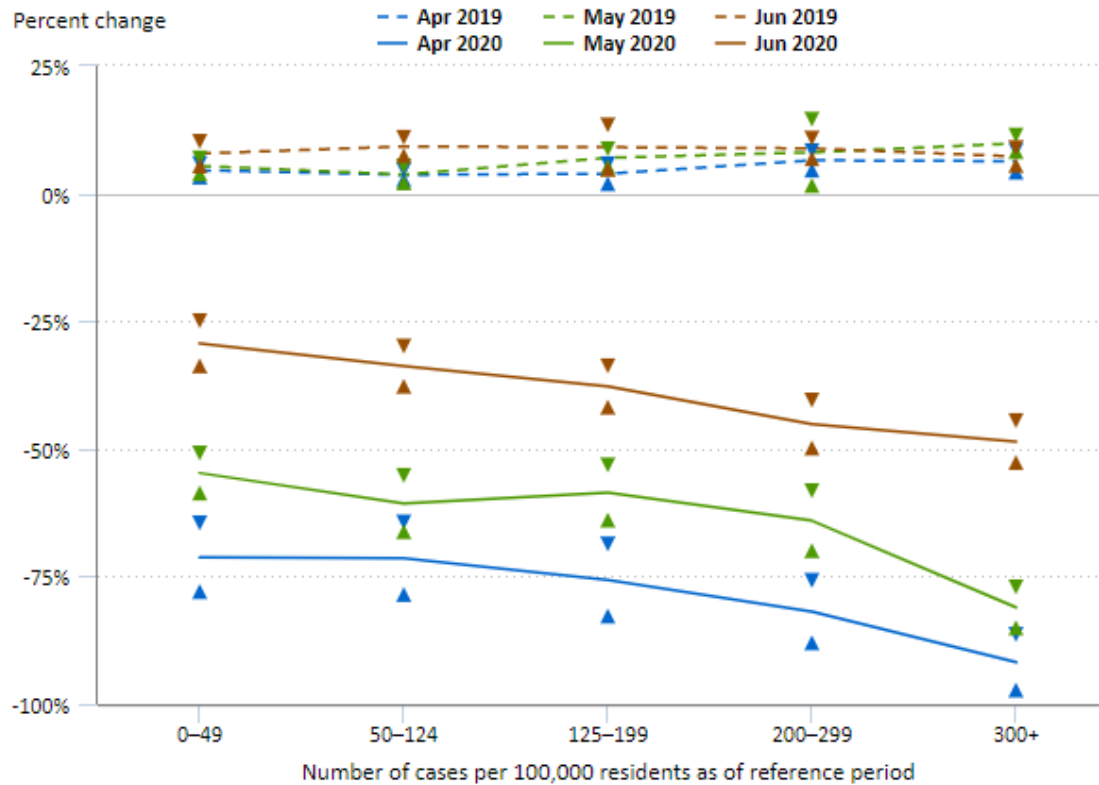
Figure 3. Average percent change in employment, by number of confirmed coronavirus disease 2019 cases, from February to reference period



Leisure and Hospitality

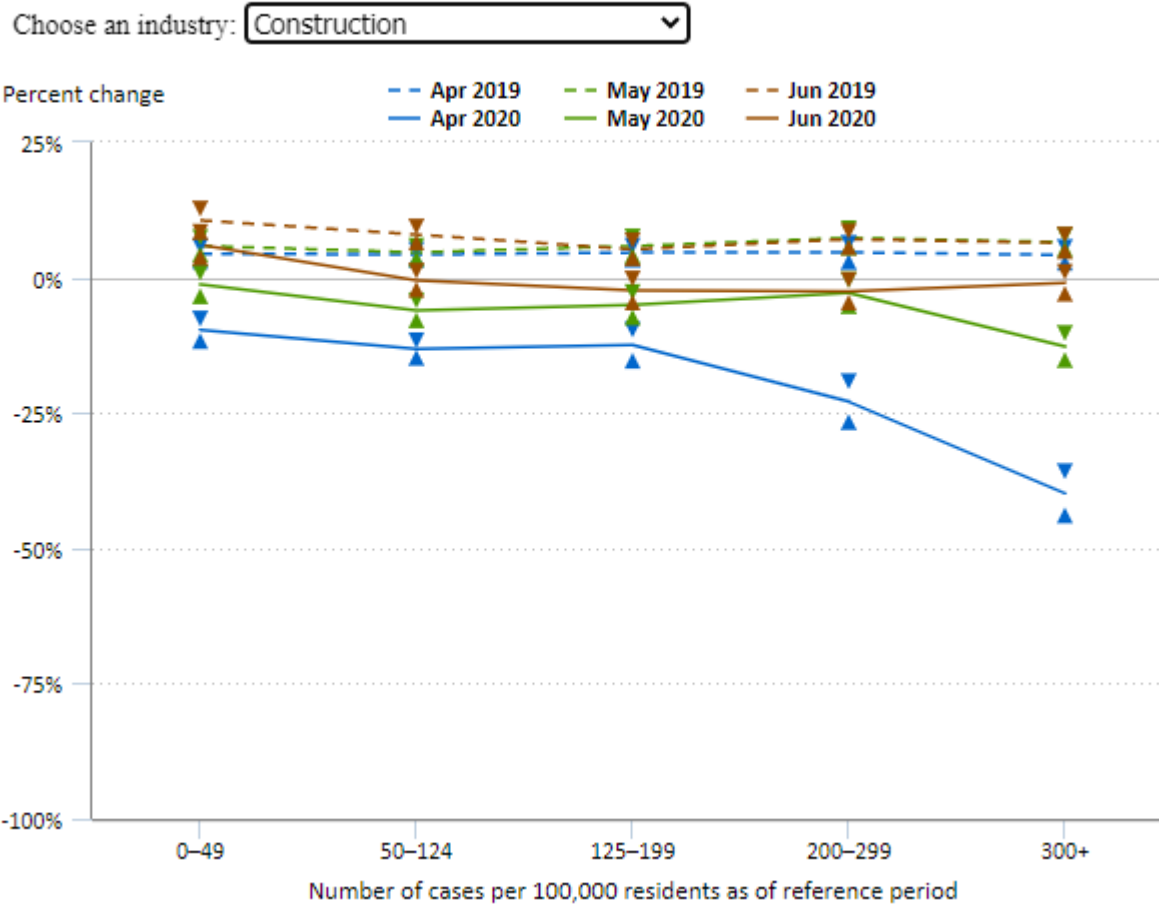
Figure 4. Average percent change in employment and number of confirmed coronavirus disease 2019 cases, by industry, from February to reference period

Choose an industry:



Construction

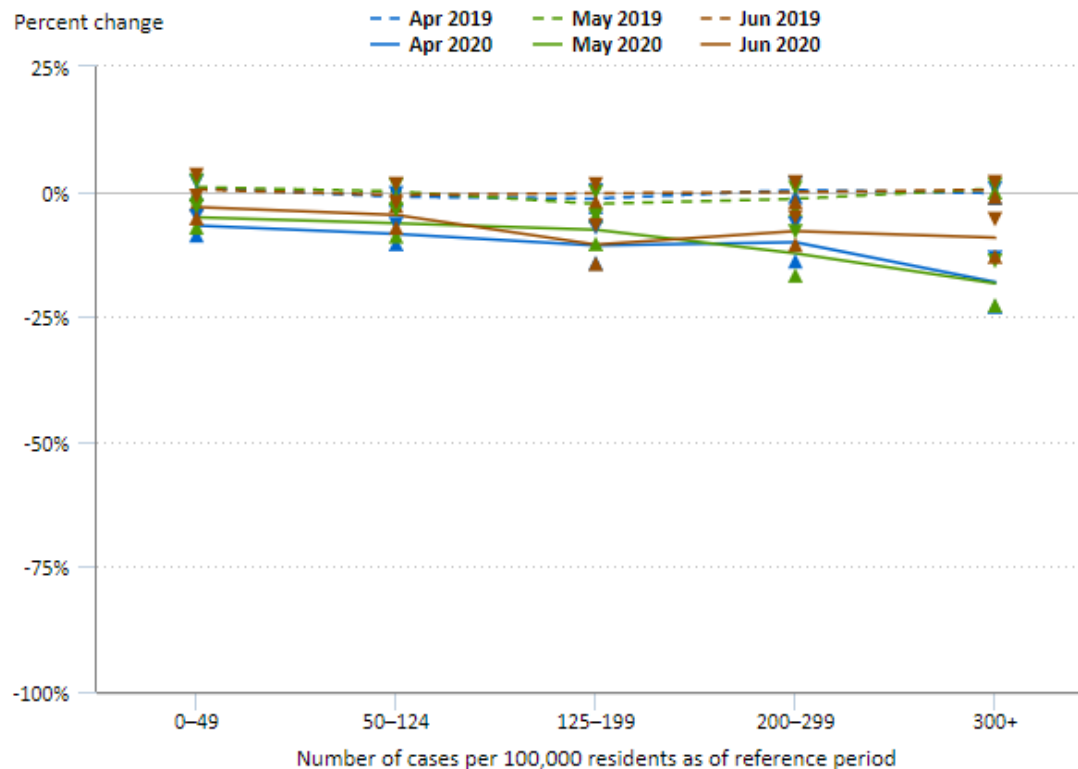
Figure 4. Average percent change in employment and number of confirmed coronavirus disease 2019 cases, by industry, from February to reference period



Transportation and Warehousing

Figure 4. Average percent change in employment and number of confirmed coronavirus disease 2019 cases, by industry, from February to reference period

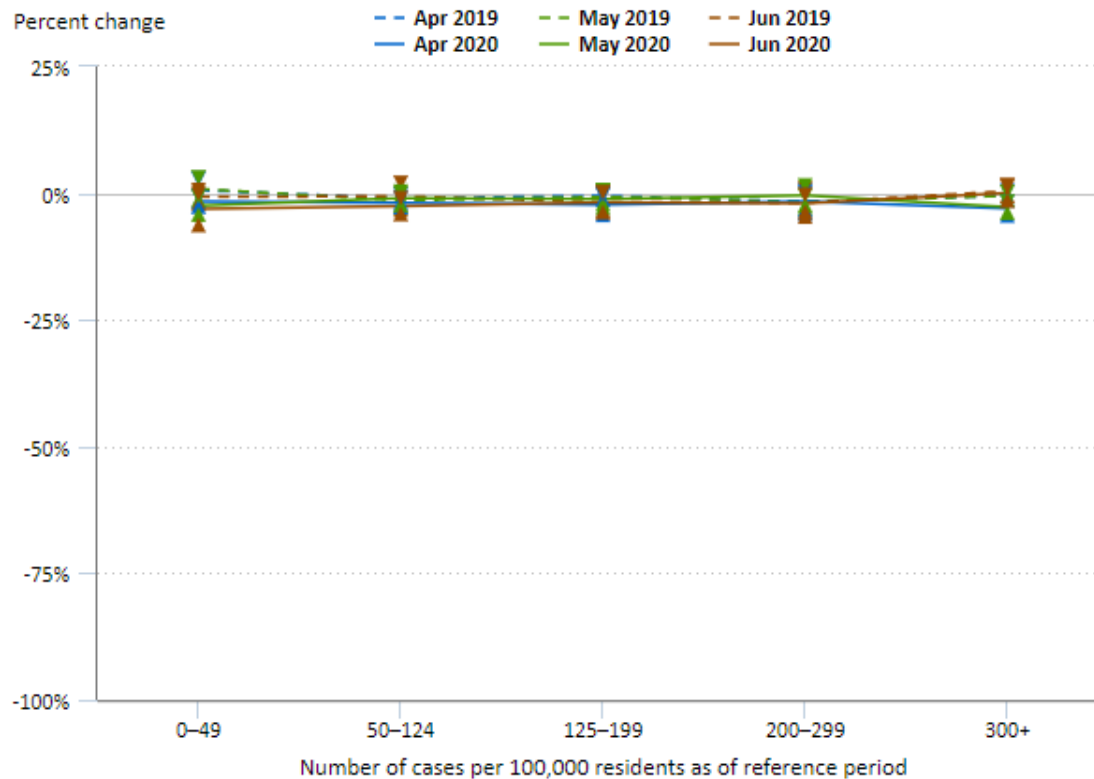
Choose an industry:



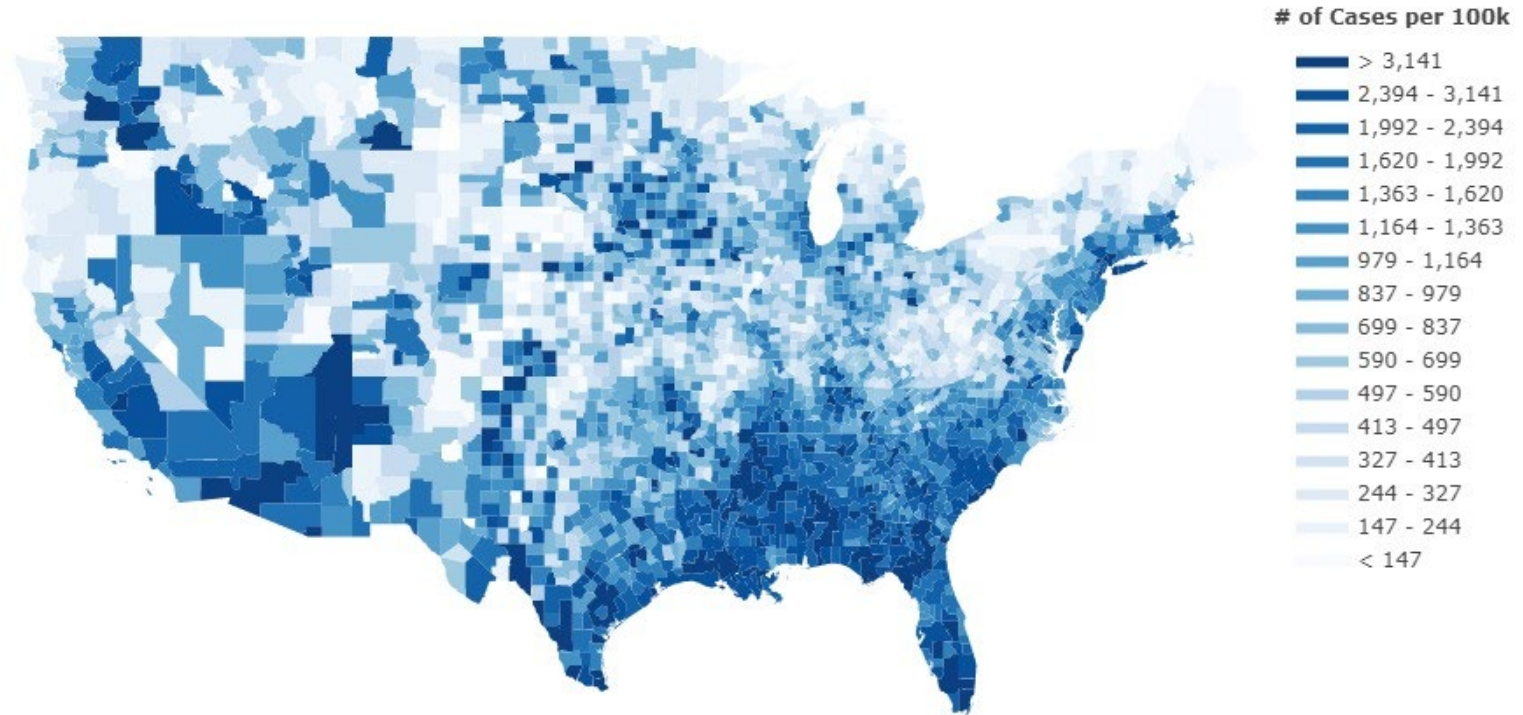
Finance and Insurance

Figure 4. Average percent change in employment and number of confirmed coronavirus disease 2019 cases, by industry, from February to reference period

Choose an industry:



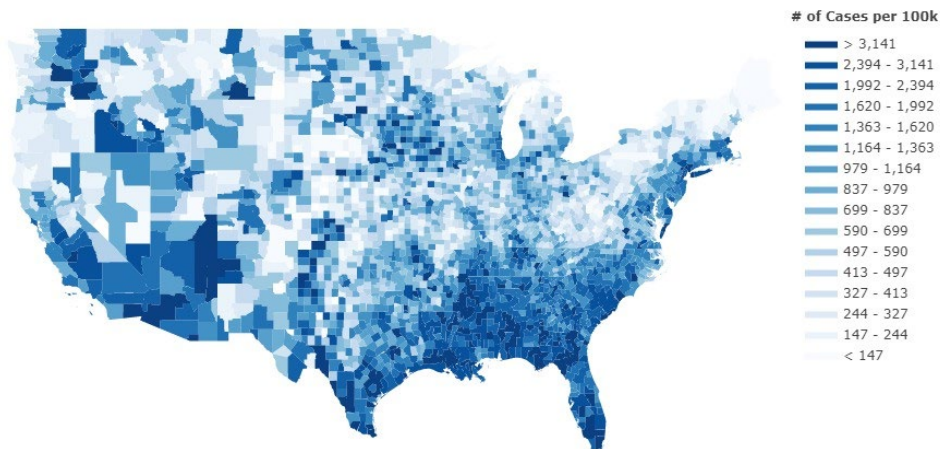
Spread of COVID-19 as of 8/14



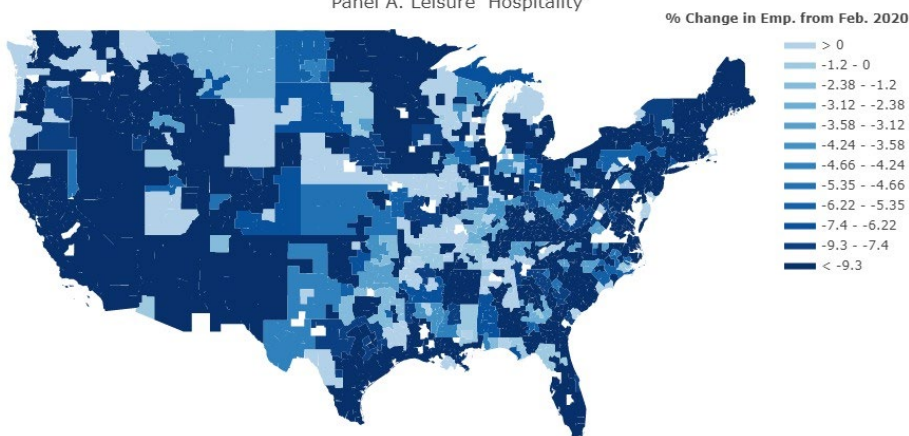
Leisure and Hospitality

Virus Spread as of 8/14

Employment Change for August 2020



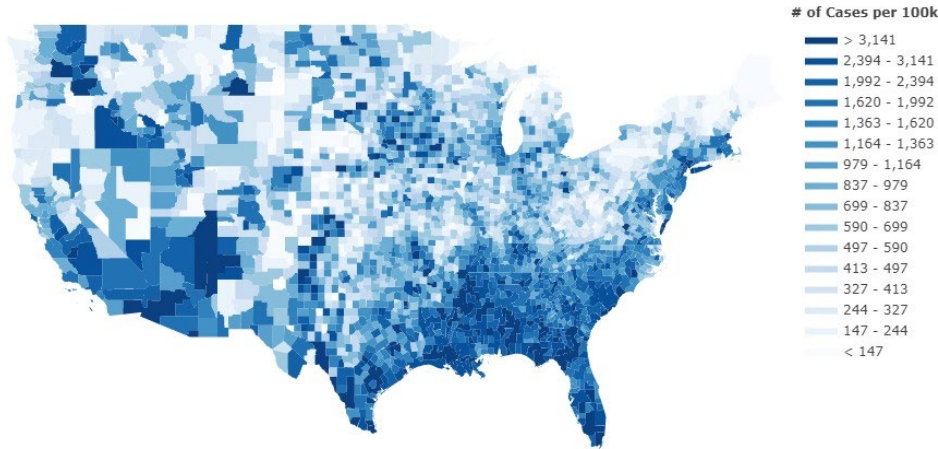
Panel A. Leisure Hospitality



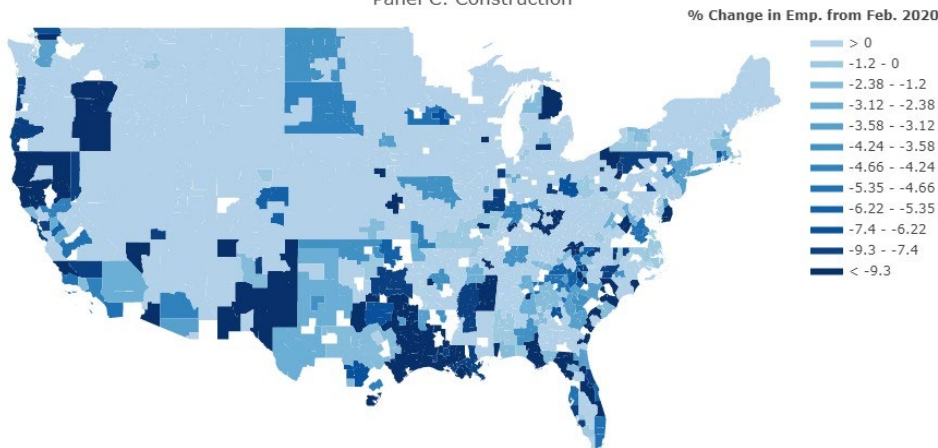
Construction

Virus Spread as of 8/14

Employment Change for August 2020



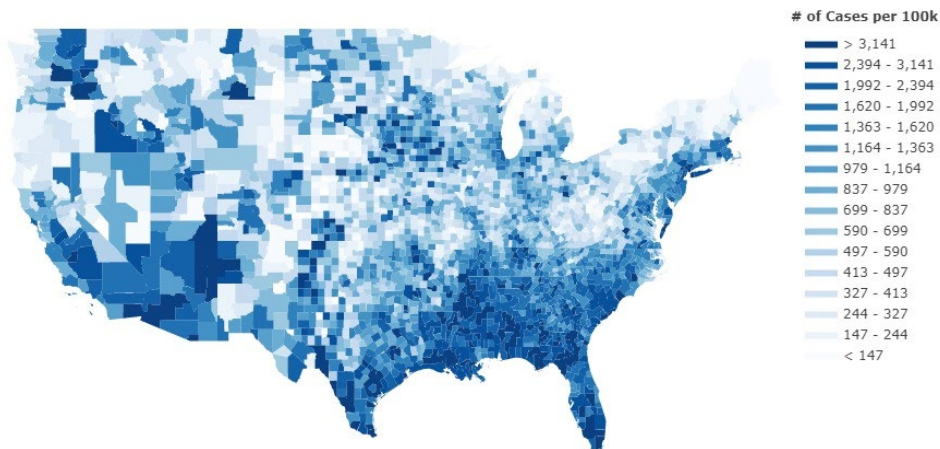
Panel C. Construction



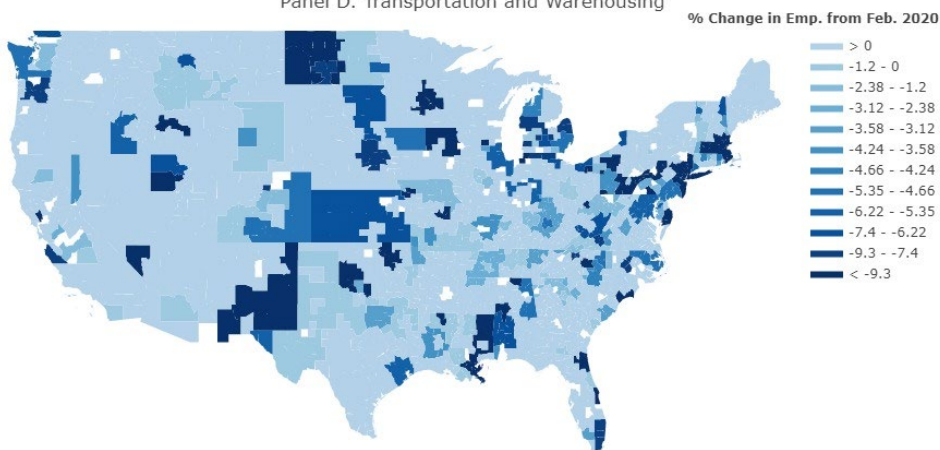
Transportation and Warehousing

Virus Spread as of 8/14

Employment Change for August 2020

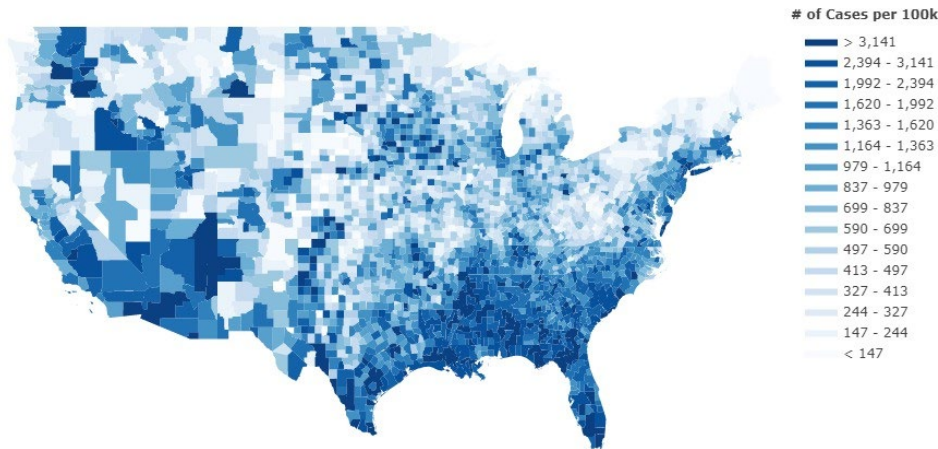


Panel D. Transportation and Warehousing

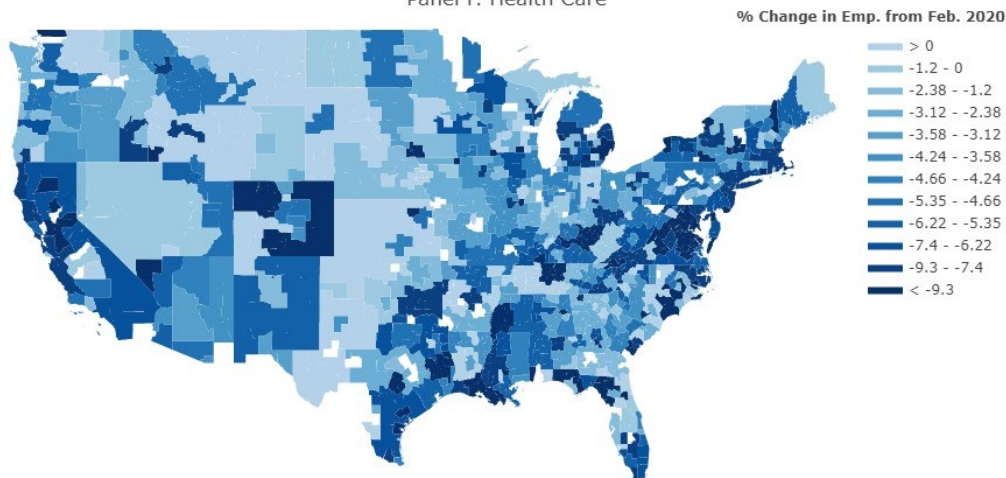


Health Care

Virus Spread as of 8/14



Panel F. Health Care



Employment Change for August 2020

Changing Gears: Employer Size

- Paycheck Protection Program targets loans / grants to small businesses
 - ▶ Primarily under 500 employment



Changing Gears: Employer Size

- Paycheck Protection Program targets loans / grants to small businesses
 - ▶ Primarily under 500 employment
- Federal Reserve's Lending Programs target bond buying to large companies
 - ▶ Secondary Credit Facilities

Changing Gears: Employer Size

- Paycheck Protection Program targets loans / grants to small businesses
 - ▶ Primarily under 500 employment
- Federal Reserve's Lending Programs target bond buying to large companies
 - ▶ Secondary Credit Facilities
- **What has happened to employment at different size classes?**

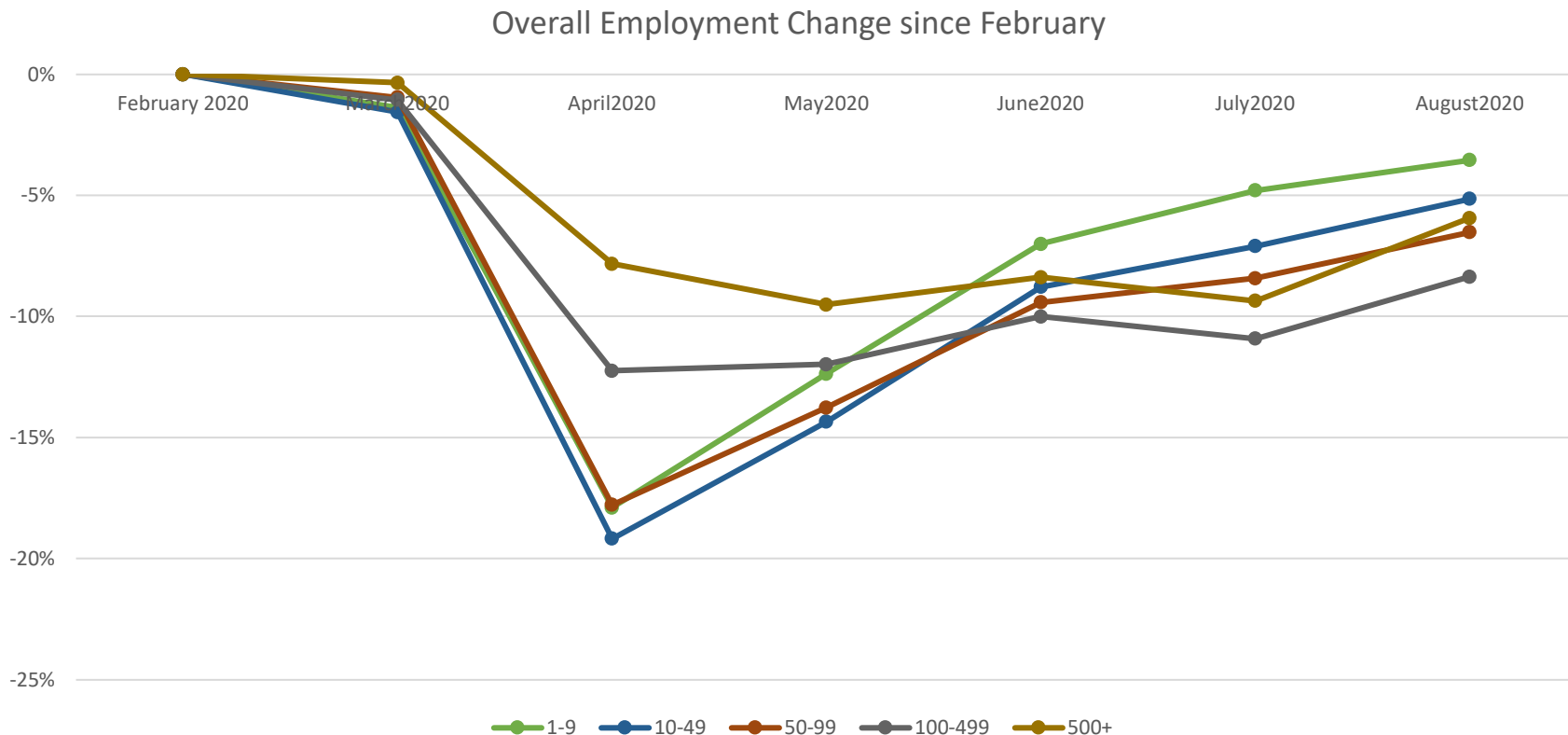
Dalton, Handwerker, Loewenstein (2020)

- Estimating Employment Change by Size Class
 - ▶ Change in employment for continuing employers
 - ▶ Reported closures
 - ▶ Nonresponse closure adjustment

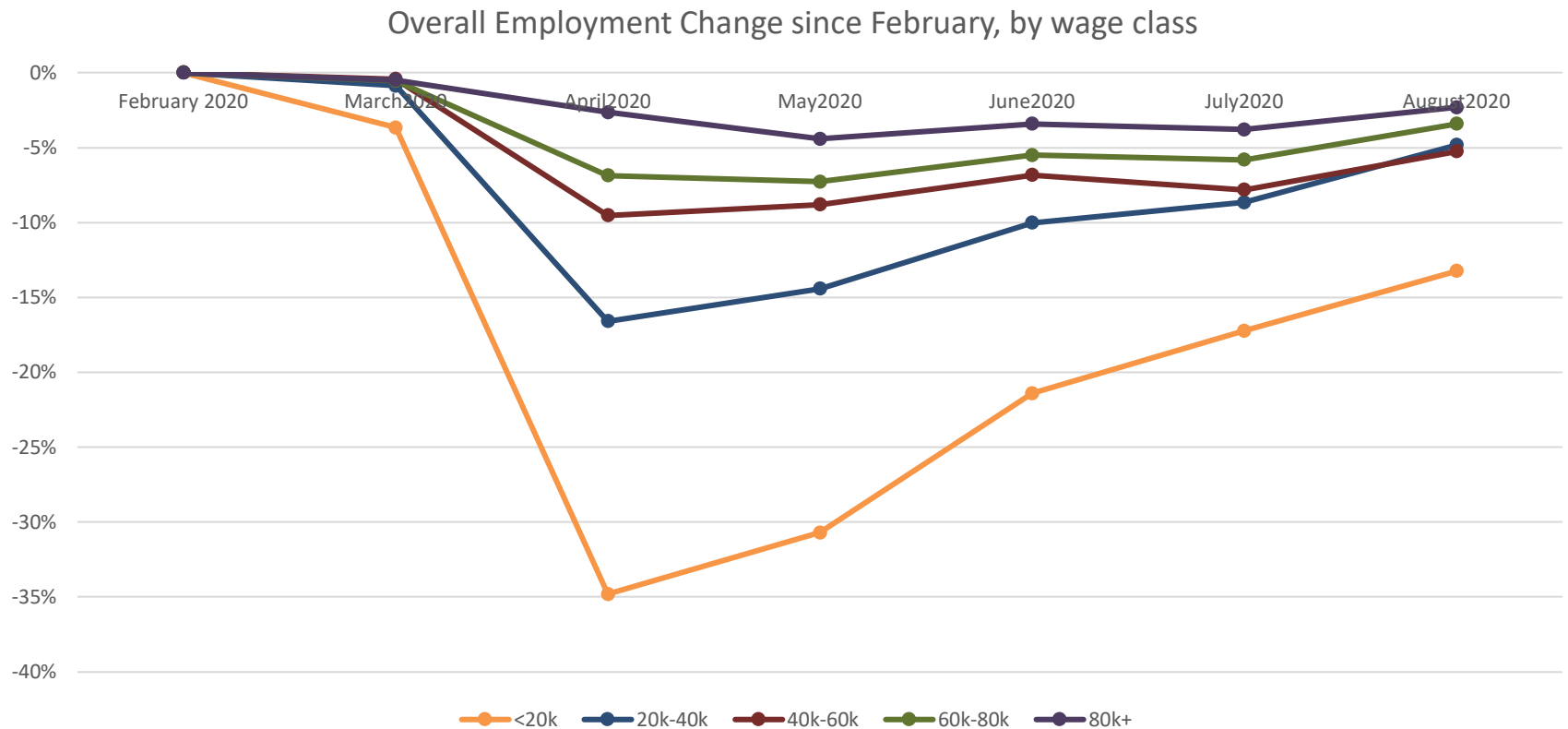
Each Component of Employment Change, by size class



Combining Components

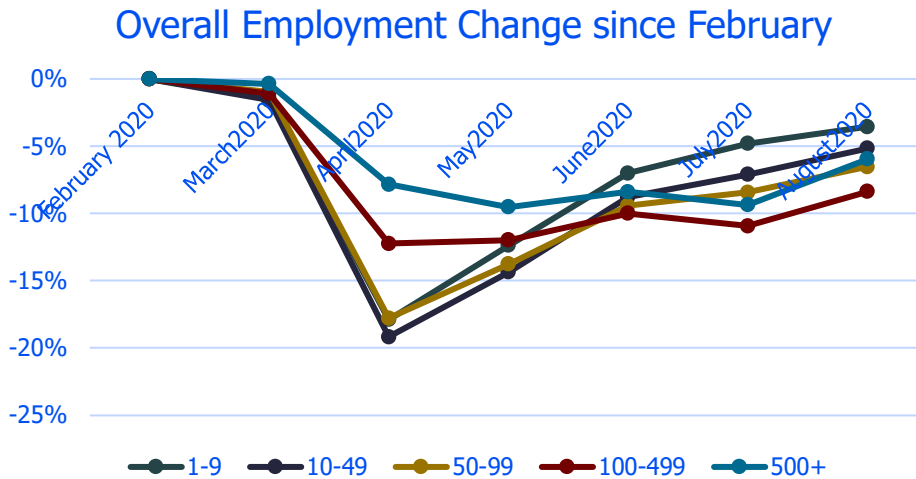


Same idea, but Wage Class instead of Size Class

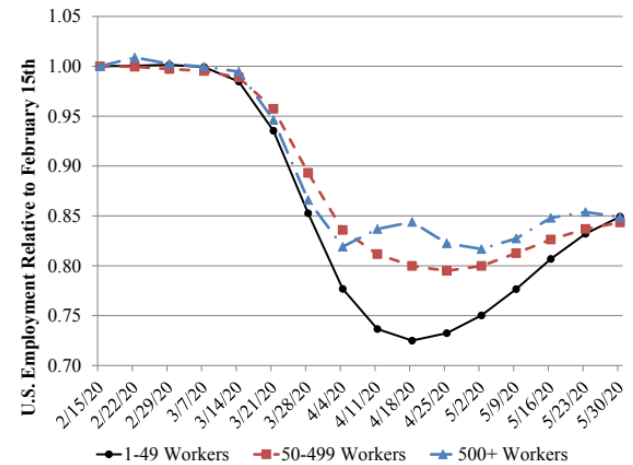


Comparisons to Private Data Size Class

Dalton, Handwerker, Loewenstein
(2020) using CES data



Cajner et al (2020) using ADP data



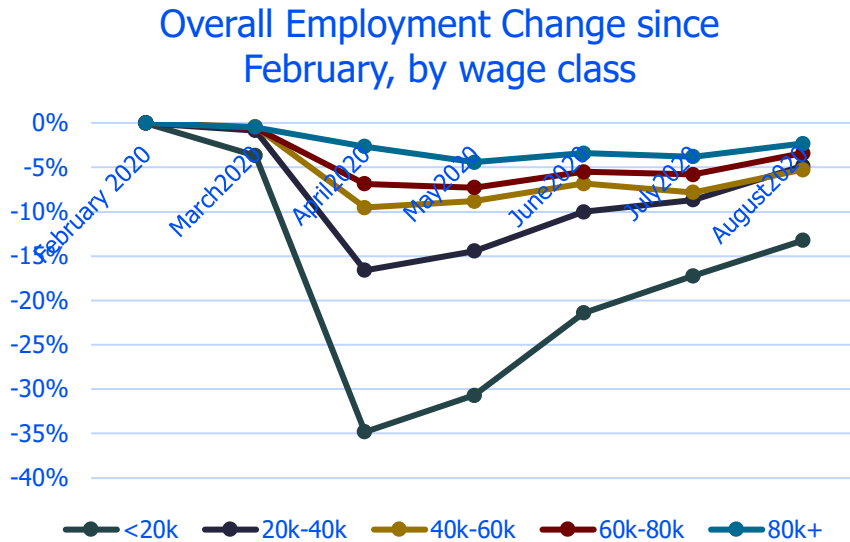
PANEL A: PAID
EMPLOYMENT



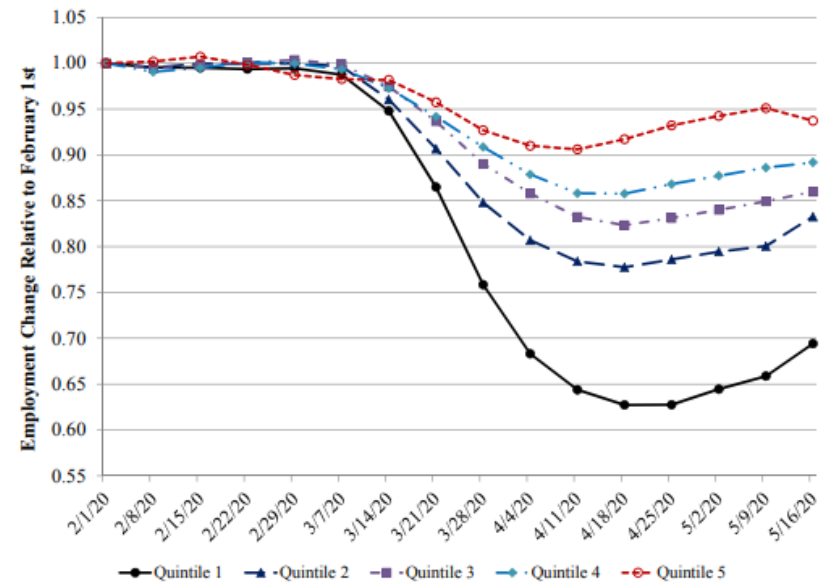
Comparisons to Private Data

Wage Class

Dalton, Loewenstein, Piccone, Polivka (2020) using CES data



Cajner et al (2020) using ADP data



Last thing!

- New survey put together by BLS
- The **Business Response Survey (BRS)**
 - ▶ Online Survey with sample of 600,000



Last thing!

- New survey put together by BLS
- The **Business Response Survey (BRS)**
 - ▶ Online Survey with sample of 600,000
 - ▶ Topics
 - Telework
 - Federal assistance
 - Health insurance
 - Experiences
 - Pay decisions



Last thing!

- New survey put together by BLS
- The **Business Response Survey (BRS)**
 - ▶ Online Survey with sample of 600,000
 - ▶ Topics
 - Telework
 - Federal assistance
 - Health insurance
 - Experiences
 - Pay decisions
 - ▶ **First release in October!**



Contact Information

Michael Dalton
Research Economist
ERPDS

www.bls.gov

202-691-7403

dalton.michael@bls.gov

